

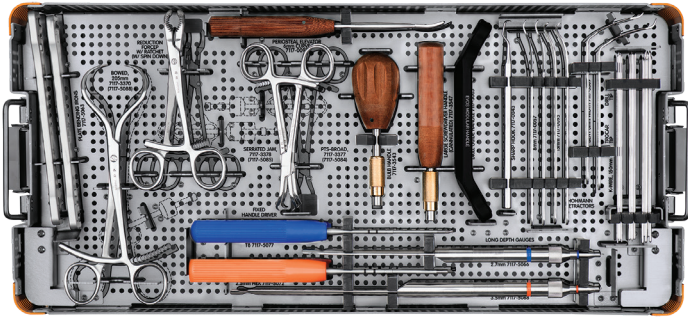
**Smith+Nephew**

EVOS<sup>◇</sup> SMALL  
Plating System

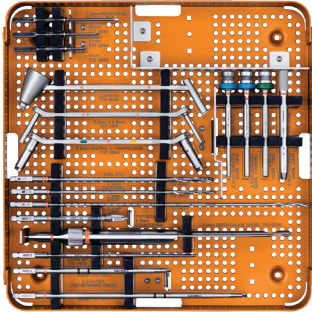
Tray Layout Guide



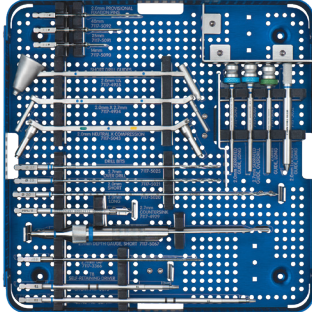
# EVOS<sup>®</sup> SMALL Instrument Tray



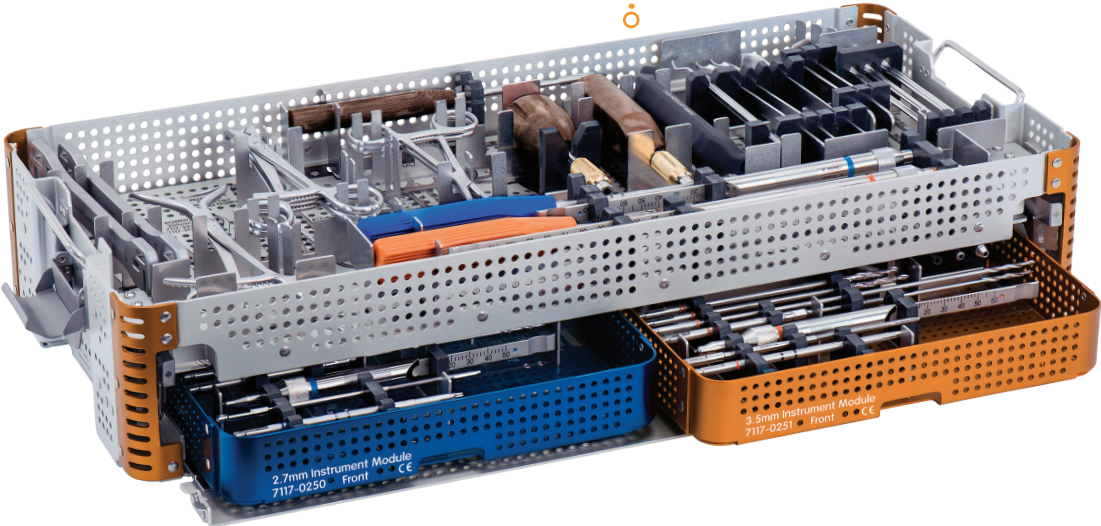
General Instrument Tray



3.5mm Instrument Tray



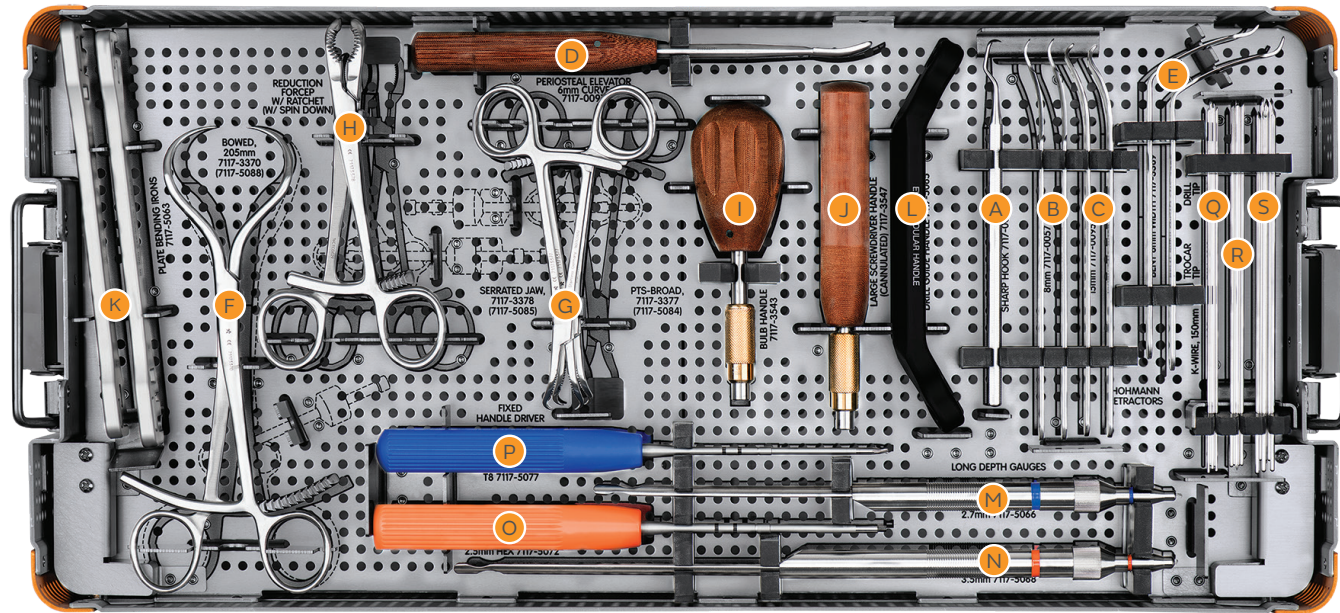
2.7mm Instrument Tray



2.7mm Instrument Module  
7117-0250  
Front

3.5mm Instrument Module  
7117-0251  
Front

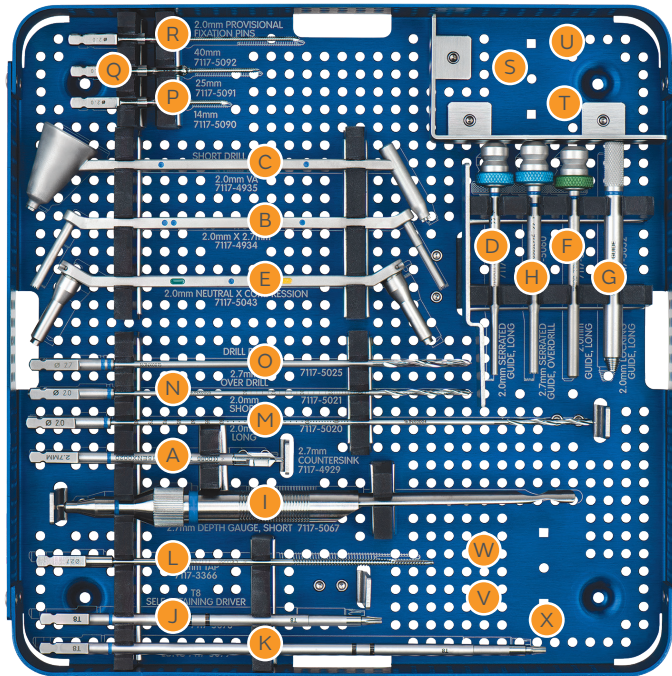
# EVOS<sup>®</sup> Instrument Tray



Cat no	Description	Qty	Ref
<b>General instruments</b>			
7117-0043	Sharp Hook	1	A
7117-0057	Hohmann Retractor 8mm	2	B
7117-0095	Hohmann Retractor 15mm	2	C
7117-0097	Periosteal Elevator - 6mm Curve	1	D
7117-3369	Hohmann Retractor - Bent 8mm Width	2	E
7117-3370	Reduction Forceps w/Ratchet, Bowed, 205mm	1	F
7117-3377	Reduction Forceps w/Pts-Broad	2	G
7117-3378	Reduction Forceps w/Serrated Jaw	2	H
7117-3543	Bulb Handle	1	I
7117-3547	Large Screwdriver Handle (cannulated)	1	J
7117-5063	EVOS SMALL Fragment Plate Bending Irons	2	K
7117-5065	EVOS Modular Handle	1	L

Cat no	Description	Qty	Ref
<b>Size specific instruments</b>			
7117-5066	EVOS SMALL 2.7mm Depth Gauge, Long	1	M
7117-5068	EVOS SMALL 3.5mm Depth Gauge, Long	1	N
7117-5072	2.5mm Fixed Handle Hex Driver	1	O
7117-5077	T8 Fixed Handle Driver	1	P
<b>Disposables</b>			
7116-1012	K-wire 1.25mm X 150mm Trocar Tip	6	Q
7116-1016	K-wire 1.6mm X 150mm Trocar Tip	6	R
7116-1020	K-wire 2.0mm X 150mm Trocar Tip	6	S

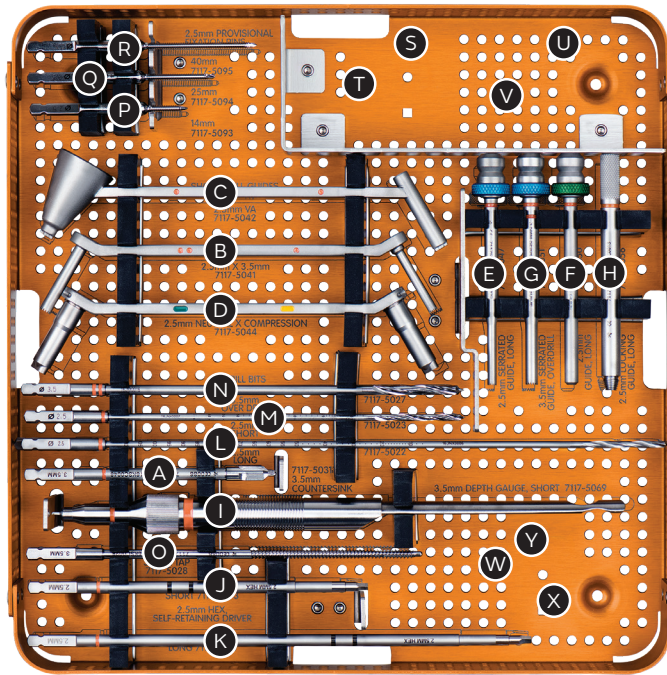
# EVOS<sup>®</sup> SMALL 2.7mm Instrumentation Module



Cat no	Description	Qty	Ref
<b>2.7mm instruments</b>			
7117-4929	EVOS 2.7mm Countersink w/AO QC	1	A
7117-4934	EVOS 2.0mm x 2.7mm Drill Guide	1	B
7117-4935	EVOS 2.0mm Fixed/VA Drill Guide	1	C
7117-5040	EVOS 2.0mm Snap In Serrated Drill Guide	1	D
7117-5043	EVOS 2.0mm Compression/Neutral Drill Guide	1	E
7117-5045	EVOS 2.0mm Snap In Drill Guide	1	F
7117-5052	EVOS 2.0mm Locking Drill Guide	2	G
7117-5060	EVOS 2.7mm Snap In Serrated Drill Guide	1	H
7117-5067	EVOS SMALL 2.7mm Depth Gauge, Short	1	I
7117-5078	T8 Screwdriver Shaft Short	1	J
7117-5079	T8 Screwdriver Shaft Long	1	K

Cat no	Description	Qty	Ref
<b>Disposables</b>			
7117-3366	EVOS 2.7mm Tap w/AO QC	1	L
7117-5020	EVOS SMALL 2.0mm Drill w/AO QC, Long	2	M
7117-5021	EVOS SMALL 2.0mm Drill w/AO QC, Short	2	N
7117-5023	EVOS SMALL 2.5mm Drill w/AO QC, Short	2	O
7117-5090	2.0mm Provisional Fixation Pin – 14mm	1	P
7117-5091	2.0mm Provisional Fixation Pin – 25mm	1	Q
7117-5092	2.0mm Provisional Fixation Pin – 40mm	1	R
<b>Optional instrumentation</b>			
7117-5048	EVOS 2.7mm Locking Screw Guide	1	S
7117-5049	EVOS 2.0mm Drill Guide Insert	1	T
7117-4996	EVOS SMALL 2.7mm Locking Screw Guide Bracket	1	U
7117-4986	T8 Linear Driver Shaft	1	V
7117-4989	T8 Holding Sleeve	1	W
7117-4998	EVOS SMALL 2.7mm Linear Driver Bracket	1	X

# EVOS<sup>®</sup> SMALL 3.5mm Instrumentation Module



Cat no	Description	Qty	Ref
<b>3.5mm instruments</b>			
7117-5031	EVOS 3.5mm Countersink w/AO QC	1	A
7117-5041	EVOS 2.5mm x 3.5mm Drill Guide	1	B
7117-5042	EVOS 2.5mm Fixed/Va Drill Guide	1	C
7117-5044	EVOS 2.5mm Compression/Neutral Drill Guide	1	D
7117-5047	EVOS 2.5mm Snap In Serrated Drill Guide	1	E
7117-5050	EVOS 2.5mm Snap In Drill Guide	1	F
7117-5051	EVOS 3.5mm Snap In Serrated Drill Guide	1	G
7117-5056	EVOS 2.5mm Locking Drill Guide	2	H
7117-5069	EVOS SMALL 3.5mm Depth Gauge, Short	1	I
7117-5073	2.5mm Hex Driver Shaft Short	1	J
7117-5074	2.5mm Hex Driver Shaft Long	1	K

Cat no	Description	Qty	Ref
<b>Disposables</b>			
7117-5022	EVOS SMALL 2.5mm Drill w/AO QC, Long	2	L
7117-5023	EVOS SMALL 2.5mm Drill w/AO QC, Short	2	M
7117-5027	EVOS SMALL 3.5mm Over Drill w/AO QC Short	1	N
7117-5028	EVOS 3.5mm Tap w/AO QC	1	O
7117-5093	2.5mm Provisional Fixation Pin - 14mm	1	P
7117-5094	2.5mm Provisional Fixation Pin - 25mm	1	Q
7117-5095	2.5mm Provisional Fixation Pin - 40mm	1	R
<b>Optional instrumentation</b>			
7117-5057	EVOS 3.5mm Locking Screw Guide	1	S
7117-5058	EVOS 2.5mm Drill Guide Insert	1	T
7117-5097	Screw Guide Removal Tool	1	U
7117-4997	EVOS SMALL 3.5mm Locking Screw Guide Bracket	1	V
7117-5098	2.5mm Hex Linear Driver Shaft	1	W
7117-6002	2.5mm Hex Holding Sleeve	1	X
7117-6004	EVOS SMALL 3.5mm Linear Driver Bracket	1	Y

# EVOS<sup>®</sup> SMALL Implant Tray



# 2.7mm/4.0mm Screws



Cat no	Length	Qty	Ref
<b>2.7mm Cortex Screw</b>			
7240-2710	10mm	4	A
7240-2711	11mm	4	A
7240-2712	12mm	4	A
7240-2713	13mm	4	A
7240-2714	14mm	4	A
7240-2715	15mm	4	A
7240-2716	16mm	4	A
7240-2717	17mm	4	A
7240-2718	18mm	4	A
7240-2719	19mm	4	A
7240-2720	20mm	4	A
7240-2722	22mm	4	A
7240-2724	24mm	4	A
7240-2726	26mm	4	A
7240-2728	28mm	4	A
7240-2730	30mm	4	A
7240-2732	32mm	4	A
7240-2734	34mm	4	A
7240-2736	36mm	4	A
7240-2738	38mm	4	A
7240-2740	40mm	4	A
7240-2742	42mm	4	A
7240-2744	44mm	4	A
7240-2746	46mm	4	A
7240-2748	48mm	4	A
7240-2750	50mm	2	A
7240-2755	55mm	2	A
7240-2760	60mm	2	A
7240-2765	65mm	2	A
7240-2770	70mm	2	A
7240-2775	75mm	2	A
7240-2780	80mm	2	A

Cat no	Length	Qty	Ref
<b>2.7mm Locking Screw</b>			
7241-2710	10mm	4	B
7241-2711	11mm	4	B
7241-2712	12mm	4	B
7241-2713	13mm	4	B
7241-2714	14mm	4	B
7241-2715	15mm	4	B
7241-2716	16mm	4	B
7241-2717	17mm	4	B
7241-2718	18mm	4	B
7241-2719	19mm	4	B
7241-2720	20mm	4	B
7241-2722	22mm	4	B
7241-2724	24mm	4	B
7241-2726	26mm	4	B
7241-2728	28mm	4	B
7241-2730	30mm	4	B
7241-2732	32mm	4	B
7241-2734	34mm	4	B
7241-2736	36mm	4	B
7241-2738	38mm	4	B
7241-2740	40mm	4	B
7241-2742	42mm	4	B
7241-2744	44mm	4	B
7241-2746	46mm	4	B
7241-2748	48mm	4	B
7241-2750	50mm	2	B
7241-2755	55mm	2	B
7241-2760	60mm	2	B
7241-2765	65mm	2	B
7241-2770	70mm	2	B
7241-2775	75mm	2	B
7241-2780	80mm	2	B



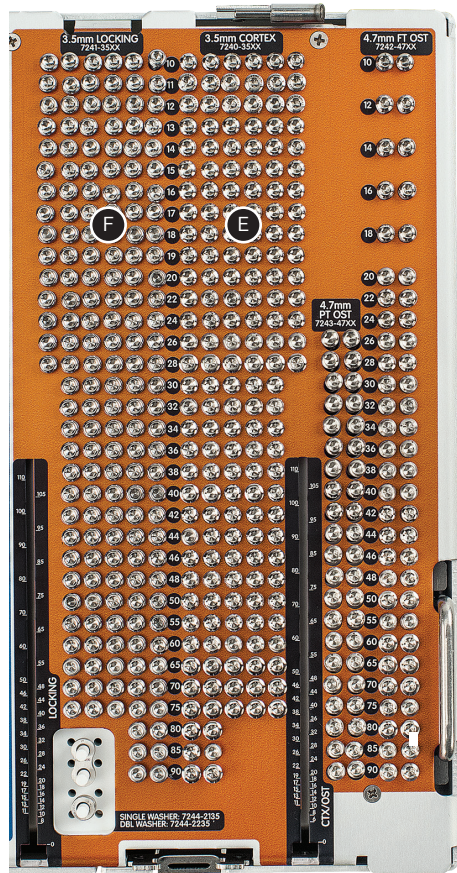


Cat no	Description	Qty	Ref
<b>Washers</b>			
7244-2127	Washer - 2.7mm Screws	6	E
7244-2227	Double Washer - 2.7mm Screws	3	E
7117-0045	Screw Forceps	1	F

Cat no	Length	Qty	Ref
<b>4.0mm Osteopenia - fully threaded</b>			
7242-4010	10mm	2	C
7242-4012	12mm	2	C
7242-4014	14mm	2	C
7242-4016	16mm	2	C
7242-4018	18mm	2	C
7242-4020	20mm	2	C
7242-4022	22mm	2	C
7242-4024	24mm	2	C
7242-4026	26mm	2	C
7242-4028	28mm	2	C
7242-4030	30mm	2	C
7242-4032	32mm	2	C
7242-4034	34mm	2	C
7242-4036	36mm	2	C
7242-4038	38mm	2	C
7242-4040	40mm	2	C
7242-4042	42mm	2	C
7242-4044	44mm	2	C
7242-4046	46mm	2	C
7242-4048	48mm	2	C
7242-4050	50mm	2	C
7242-4055	55mm	2	C
7242-4060	60mm	2	C
7242-4065	65mm	2	C
7242-4070	70mm	2	C
7242-4075	75mm	2	C
7242-4080	80mm	2	C

Cat no	Length	Qty	Ref
<b>4.0mm Osteopenia - partially threaded</b>			
7243-4026	26mm	2	D
7243-4028	28mm	2	D
7243-4030	30mm	2	D
7243-4032	32mm	2	D
7243-4034	34mm	2	D
7243-4036	36mm	2	D
7243-4038	38mm	2	D
7243-4040	40mm	2	D
7243-4042	42mm	2	D
7243-4044	44mm	2	D
7243-4046	46mm	2	D
7243-4048	48mm	2	D
7243-4050	50mm	2	D
7243-4055	55mm	2	D
7243-4060	60mm	2	D
7243-4065	65mm	2	D
7243-4070	70mm	2	D
7243-4075	75mm	2	D
7243-4080	80mm	2	D

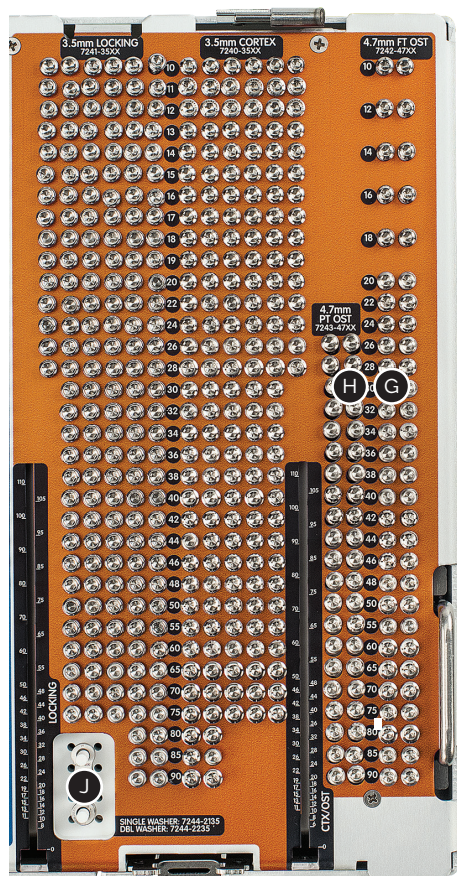
# 3.5mm/4.7mm Screws



Cat no	Length	Qty	Ref
<b>3.5mm Cortex Screw</b>			
7240-3510	10mm	6	E
7240-3511	11mm	6	E
7240-3512	12mm	6	E
7240-3513	13mm	6	E
7240-3514	14mm	6	E
7240-3515	15mm	6	E
7240-3516	16mm	6	E
7240-3517	17mm	6	E
7240-3518	18mm	6	E
7240-3519	19mm	6	E
7240-3520	20mm	6	E
7240-3522	22mm	6	E
7240-3524	24mm	6	E
7240-3526	26mm	6	E
7240-3528	28mm	6	E
7240-3530	30mm	5	E
7240-3532	32mm	5	E
7240-3534	34mm	5	E
7240-3536	36mm	5	E
7240-3538	38mm	5	E
7240-3540	40mm	5	E
7240-3542	42mm	5	E

7240-3544	44mm	5	E
7240-3546	46mm	5	E
7240-3548	48mm	5	E
7240-3550	50mm	5	E
7240-3555	55mm	5	E
7240-3560	60mm	5	E
7240-3565	65mm	5	E
7240-3570	70mm	5	E
7240-3575	75mm	5	E
7240-3580	80mm	2	E
7240-3585	85mm	2	E
7240-3590	90mm	2	E
<b>3.5mm Locking Screw</b>			
7241-3510	10mm	6	F
7241-3511	11mm	6	F
7241-3512	12mm	6	F
7241-3513	13mm	6	F
7241-3514	14mm	6	F
7241-3515	15mm	6	F
7241-3516	16mm	6	F
7241-3517	17mm	6	F
7241-3518	18mm	6	F
7241-3519	19mm	6	F

7241-3520	20mm	6	F
7241-3522	22mm	6	F
7241-3524	24mm	6	F
7241-3526	26mm	6	F
7241-3528	28mm	6	F
7241-3530	30mm	5	F
7241-3532	32mm	5	F
7241-3534	34mm	5	F
7241-3536	36mm	5	F
7241-3538	38mm	5	F
7241-3540	40mm	5	F
7241-3542	42mm	5	F
7241-3544	44mm	5	F
7241-3546	46mm	5	F
7241-3548	48mm	5	F
7241-3550	50mm	5	F
7241-3555	55mm	5	F
7241-3560	60mm	5	F
7241-3565	65mm	5	F
7241-3570	70mm	5	F
7241-3575	75mm	5	F
7241-3580	80mm	2	F
7241-3585	85mm	2	F
7241-3590	90mm	2	F



Cat no	Description	Qty	Ref
<b>Washers</b>			
7244-2135	EVOS <sup>®</sup> Washer - 3.5mm Screws	6	J
7244-2235	EVOS Double Washer - 3.5mm Screws	3	J
<b>Instrumentation</b>			
7117-5064	EVOS SMALL Fragment Plate Bending Pliers	1	K
7117-5075	EVOS SMALL 2.7/3.5mm Recon Bending Pliers	1	L

Cat no	Length	Qty	Ref
<b>4.7mm Osteopenia - fully threaded</b>			
7242-4710	10mm	2	G
7242-4712	12mm	2	G
7242-4714	14mm	2	G
7242-4716	16mm	2	G
7242-4718	18mm	2	G
7242-4720	20mm	2	G
7242-4722	22mm	2	G
7242-4724	24mm	2	G
7242-4726	26mm	2	G
7242-4728	28mm	2	G
7242-4730	30mm	2	G
7242-4732	32mm	2	G
7242-4734	34mm	2	G
7242-4736	36mm	2	G
7242-4738	38mm	2	G
7242-4740	40mm	2	G
7242-4742	42mm	2	G
7242-4744	44mm	2	G
7242-4746	46mm	2	G
7242-4748	48mm	2	G
7242-4750	50mm	2	G
7242-4755	55mm	2	G
7242-4760	60mm	2	G
7242-4765	65mm	2	G
7242-4770	70mm	2	G
7242-4775	75mm	2	G
7242-4780	80mm	2	G
7242-4785	85mm	2	G
7242-4790	90mm	2	G

Cat no	Length	Qty	Ref
<b>4.7mm Osteopenia - partially threaded</b>			
7243-4726	26mm	2	H
7243-4728	28mm	2	H
7243-4730	30mm	2	H
7243-4732	32mm	2	H
7243-4734	34mm	2	H
7243-4736	36mm	2	H
7243-4738	38mm	2	H
7243-4740	40mm	2	H
7243-4742	42mm	2	H
7243-4744	44mm	2	H
7243-4746	46mm	2	H
7243-4748	48mm	2	H
7243-4750	50mm	2	H
7243-4755	55mm	2	H
7243-4760	60mm	2	H
7243-4765	65mm	2	H
7243-4770	70mm	2	H
7243-4775	75mm	2	H
7243-4780	80mm	2	H
7243-4785	85mm	2	H
7243-4790	90mm	2	H

# EVOS<sup>SMALL</sup> Straight Plate Tray



Cat no	Description	Qty	Ref
--------	-------------	-----	-----

## 2.7mm Recon Plates

7244-0304	4H, 33mm	1	A
7244-0306	6H, 49mm	1	A
7244-0308	8H, 65mm	1	A
7244-0310	10H, 81mm	1	A
7244-0315*	15H, 121mm	0	A
7244-0318*	18H, 145mm	0	A

## 2.7mm Compression Plates

7244-0404	4H, 33mm	1	B
7244-0406	6H, 50mm	1	B
7244-0408	8H, 67mm	1	B
7244-0410	10H, 84mm	1	B
7244-0415	15H, 127mm	1	B
7244-0418*	18H, 153mm	0	B

Cat no	Description	Qty	Ref
--------	-------------	-----	-----

## 3.5mm Recon Plates

7244-0904	4H, 44mm	1	C
7244-0906	6H, 66mm	1	C
7244-0908	8H, 88mm	1	C
7244-0910	10H, 110mm	1	C
7244-0912*	12H, 132mm	0	C
7244-0914*	14H, 154mm	0	C
7244-0916*	16H, 176mm	0	C
7244-0918*	18H, 198mm	0	C
7244-0920*	20H, 220mm	0	C
7244-0922*	22H, 242mm	0	C

## 3.5mm Compression Plates

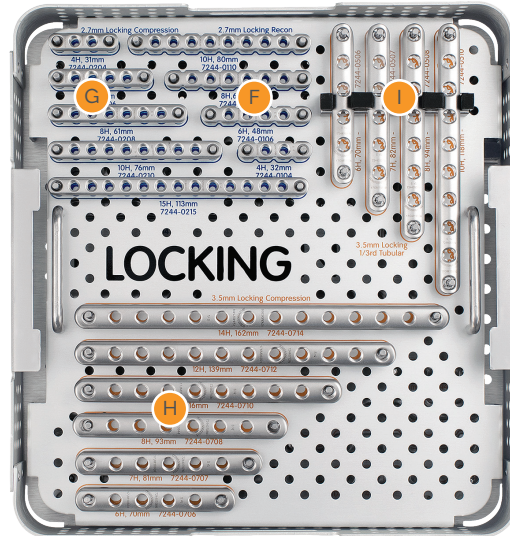
7244-1004*	4H, 52mm	0	D
7244-1006	6H, 77mm	1	D
7244-1007	7H, 90mm	1	D
7244-1008	8H, 102mm	1	D
7244-1010	10H, 127mm	1	D
7244-1012*	12H, 152mm	0	D
7244-1014*	14H, 177mm	0	D
7244-1016*	16H, 202mm	0	D
7244-1018*	18H, 227mm	0	D
7244-1020*	20H, 252mm	0	D

Cat no	Description	Qty	Ref
--------	-------------	-----	-----

## 3.5mm 1/3 Tubular Plates

7244-0802*	2H, 22mm	0	E
7244-0804*	4H, 46mm	0	E
7244-0806	6H, 70mm	1	E
7244-0807	7H, 82mm	1	E
7244-0808	8H, 94mm	1	E
7244-0810	10H, 118mm	1	E
7244-0812*	12H, 142mm	0	E

\*Sterile only



**Cat no Description Qty Ref**

**2.7mm Locking Recon Plates**

7244-0104	4H, 32mm	1	F
7244-0106	6H, 70mm	1	F
7244-0108	8H, 94mm	1	F
7244-0110	10H, 118mm	1	F
7244-0115*	15H, 120mm	0	F
7244-0118*	18H, 144mm	0	F

**2.7mm Locking Compression Plates**

7244-0204	4H, 31mm	1	G
7244-0206	6H, 46mm	1	G
7244-0208	8H, 61mm	1	G
7244-0210	10H, 76mm	1	G
7244-0215	15H, 113mm	0	G
7244-0218	18H, 136mm	0	G

**Cat no Description Qty Ref**

**3.5mm Locking Compression Plates**

7244-0706	6H, 70mm	1	H
7244-0707	7H, 81mm	1	H
7244-0708	8H, 93mm	1	H
7244-0710	10H, 116mm	1	H
7244-0712	12H, 139mm	1	H
7244-0714	14H, 162mm	1	H
7244-0716*	16H, 185mm	0	H
7244-0718*	18H, 208mm	0	H
7244-0720*	20H, 231mm	0	H

**3.5mm Locking 1/3 Tubular Plates**

7244-0502*	2H, 22mm	0	I
7244-0504*	4H, 46mm	0	I
7244-0506	6H, 70mm	1	I
7244-0507	7H, 82mm	1	I
7244-0508	8H, 94mm	1	I
7244-0510	10H, 118mm	1	I
7244-0512*	12H, 142mm	0	I

**3.5mm Locking Recon Plates**

7244-0604*	4H, 44mm	0	Not shown
7244-0606*	6H, 66mm	0	Not shown
7244-0608*	8H, 88mm	0	Not shown
7244-0610*	10H, 110mm	0	Not shown
7244-0612*	12H, 132mm	0	Not shown
7244-0614*	14H, 154mm	0	Not shown
7244-0616*	16H, 176mm	0	Not shown
7244-0618*	18H, 198mm	0	Not shown
7244-0620*	20H, 220mm	0	Not shown
7244-0622*	22H, 242mm	0	Not shown

\*Sterile only

# EVOS<sup>®</sup> SMALL Auxiliary Screw Caddy

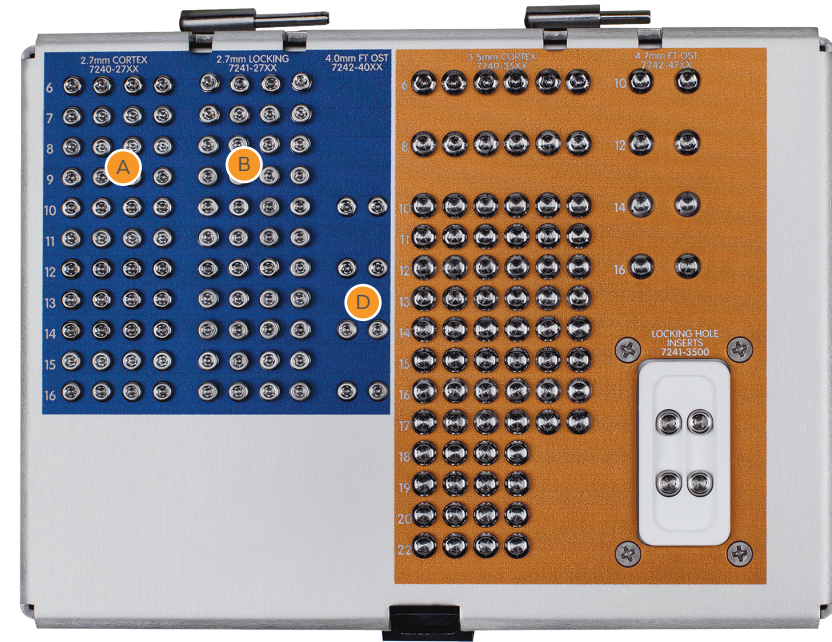
Cat no Description Qty Ref

## 2.7mm Cortex Screws

7240-2706	EVOS 2.7mm x 6mm CTX SCR T8 S-T	4	A
7240-2707	EVOS 2.7mm x 7mm CTX SCR T8 S-T	4	A
7240-2708	EVOS 2.7mm x 8mm CTX SCR T8 S-T	4	A
7240-2709	EVOS 2.7mm x 9mm CTX SCR T8 S-T	4	A
7240-2710	EVOS 2.7mm x 10mm CTX SCR T8 S-T	4	A
7240-2711	EVOS 2.7mm x 11mm CTX SCR T8 S-T	4	A
7240-2712	EVOS 2.7mm x 12mm CTX SCR T8 S-T	4	A
7240-2713	EVOS 2.7mm x 13mm CTX SCR T8 S-T	4	A
7240-2714	EVOS 2.7mm x 14mm CTX SCR T8 S-T	4	A
7240-2715	EVOS 2.7mm x 15mm CTX SCR T8 S-T	4	A
7240-2716	EVOS 2.7mm x 16mm CTX SCR T8 S-T	4	A

## 2.7mm Locking Screws

7241-2706	EVOS 2.7mm x 6mm LCK SCR T8 S-T	4	B
7241-2707	EVOS 2.7mm x 7mm LCK SCR T8 S-T	4	B
7241-2708	EVOS 2.7mm x 8mm LCK SCR T8 S-T	4	B
7241-2709	EVOS 2.7mm x 9mm LCK SCR T8 S-T	4	B
7241-2710	EVOS 2.7mm x 10mm LCK SCR T8 S-T	4	B
7241-2711	EVOS 2.7mm x 11mm LCK SCR T8 S-T	4	B
7241-2712	EVOS 2.7mm x 12mm LCK SCR T8 S-T	4	B
7241-2713	EVOS 2.7mm x 13mm LCK SCR T8 S-T	4	B
7241-2714	EVOS 2.7mm x 14mm LCK SCR T8 S-T	4	B
7241-2715	EVOS 2.7mm x 15mm LCK SCR T8 S-T	4	B
7241-2716	EVOS 2.7mm x 16mm LCK SCR T8 S-T	4	B

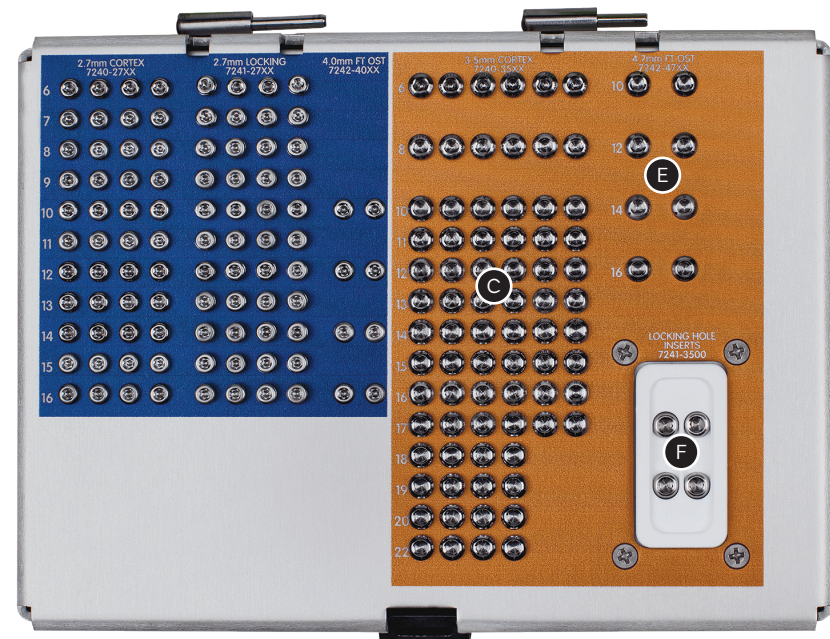


Cat no Description Qty Ref

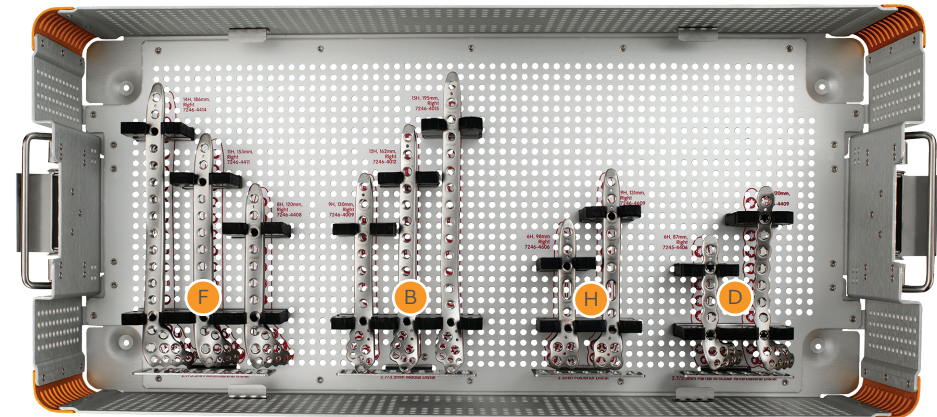
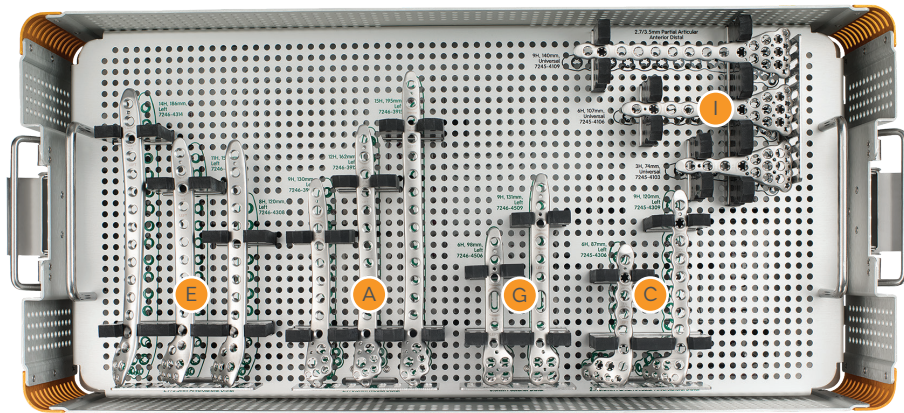
## 4.0mm Osteopenia Screws - fully threaded

7242-4010	EVOS 4.0mm x 10mm OST SCR T8 FT	2	D
7242-4012	EVOS 4.0mm x 12mm OST SCR T8 FT	2	D
7242-4014	EVOS 4.0mm x 14mm OST SCR T8 FT	2	D
7242-4016	EVOS 4.0mm x 16mm OST SCR T8 FT	2	D

Cat no	Description	Qty	Ref
<b>3.5mm Cortex Screws</b>			
7240-3506	EVOS 3.5mm x 6mm Cortex Screw Self-Tapping	6	C
7240-3508	EVOS 3.5mm x 8mm Cortex Screw Self-Tapping	6	C
7240-3510	EVOS 3.5mm x 10mm Cortex Screw Self-Tapping	6	C
7240-3511	EVOS 3.5mm x 11mm Cortex Screw Self-Tapping	6	C
7240-3512	EVOS 3.5mm x 12mm Cortex Screw Self-Tapping	6	C
7240-3513	EVOS 3.5mm x 13mm Cortex Screw Self-Tapping	6	C
7240-3514	EVOS 3.5mm x 14mm Cortex Screw Self-Tapping	6	C
7240-3515	EVOS 3.5mm x 15mm Cortex Screw Self-Tapping	6	C
7240-3516	EVOS 3.5mm x 16mm Cortex Screw Self-Tapping	6	C
7240-3517	EVOS 3.5mm x 17mm Cortex Screw Self-Tapping	6	C
7240-3518	EVOS 3.5mm x 18mm Cortex Screw Self-Tapping	4	C
7240-3519	EVOS 3.5mm x 19mm Cortex Screw Self-Tapping	4	C
7240-3520	EVOS 3.5mm x 20mm Cortex Screw Self-Tapping	4	C
7240-3522	EVOS 3.5mm x 22mm Cortex Screw Self-Tapping	4	C
<b>4.7mm Osteopenia Screws - fully threaded</b>			
7242-4010	EVOS 4.7mm x 10mm Osteopenia Screw Fully Threaded	2	E
7242-4012	EVOS 4.7mm x 12mm Osteopenia Screw Fully Threaded	2	E
7242-4014	EVOS 4.7mm x 14mm Osteopenia Screw Fully Threaded	2	E
7242-4016	EVOS 4.7mm x 16mm Osteopenia Screw Fully Threaded	2	E
<b>Locking hole inserts</b>			
7241-3500	EVOS 3.5mm Locking hole inserts	4	F



# EVOS<sup>®</sup> SMALL Pilon Plate Tray



Cat no	Description	Orientation	Qty	Ref
<b>2.7/3.5mm Medial Distal Tibia Plate</b>				
7246-3909	9H, 130mm	Left	1	A
7246-3912	12H, 162mm	Left	1	A
7246-3915	15H, 195mm	Left	1	A
7246-3918*	18H, 228mm	Left	0	A
7246-3921*	21H, 261mm	Left	0	A
<b>2.7/3.5mm Anterolateral Distal Tibia Plate, partial articular</b>				
7245-4306	6H, 87mm	Left	1	C
7245-4309	9H, 120mm	Left	1	C
<b>2.7/3.5mm Anterolateral Distal Tibia Plate</b>				
7246-4308	8H, 120mm	Left	1	E
7246-4311	11H, 153mm	Left	1	E
7246-4314	14H, 186mm	Left	1	E
7246-4317*	17H, 219mm	Left	0	E
7246-4320*	20H, 252mm	Left	0	E

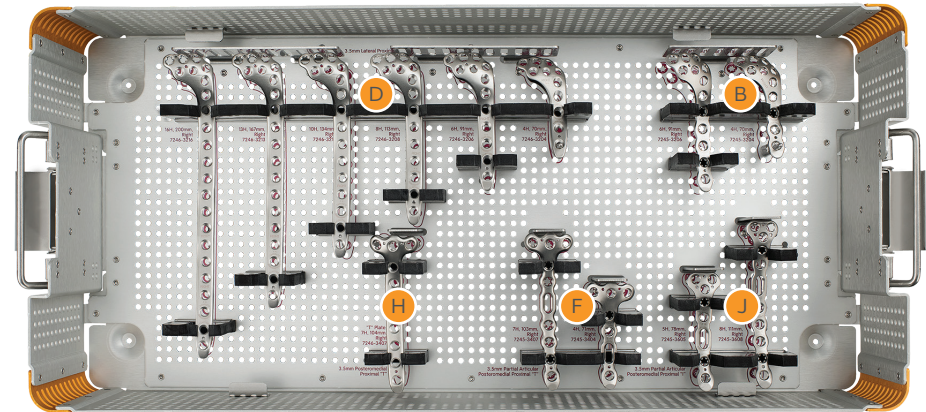
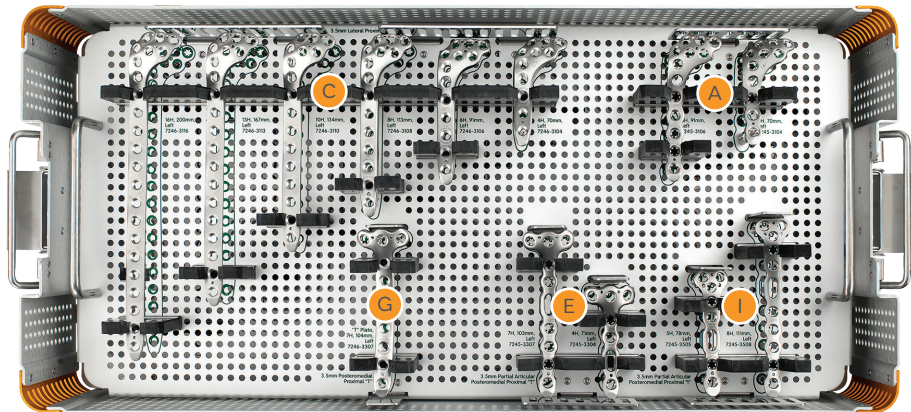
Cat no	Description	Orientation	Qty	Ref
<b>3.5mm Posterior Distal Tibia Plate</b>				
7246-4506	6H, 98mm	Left	1	G
7246-4509	9H, 131mm	Left	1	G
7246-4512*	12H, 163mm	Left	0	G
7246-4515*	15H, 196mm	Left	0	G
<b>2.7/3.5mm Anterior Distal Tibia Plate, partial articular</b>				
7245-4103	3H, 74mm	Left	1	I
7245-4106	6H, 107mm	Left	1	I
7245-4109	9H, 140mm	Left	1	I
<b>2.7/3.5mm Medial Distal Tibia Plate</b>				
7246-4009	9H, 130mm	Right	1	B
7246-4012	12H, 162mm	Right	1	B
7246-4015	15H, 195mm	Right	1	B
7246-4018*	18H, 228mm	Right	0	B
7246-4021*	21H, 261mm	Right	0	B

Cat no	Description	Orientation	Qty	Ref
<b>2.7/3.5mm Anterolateral Distal Tibia Plate, partial articular</b>				
7245-4406	6H, 87mm	Right	1	D
7245-4409	9H, 120mm	Right	1	D
<b>2.7/3.5mm Anterolateral Distal Tibia Plate</b>				
7246-4408	8H, 120mm	Right	1	F
7246-4411	11H, 153mm	Right	1	F
7246-4414	14H, 186mm	Right	1	F
7246-4417*	17H, 219mm	Right	0	F
7246-44207*	20H, 252mm	Right	0	F
<b>3.5mm Posterior Distal Tibia Plate</b>				
7246-4606	6H, 98mm	Right	1	H
7246-4609	9H, 131mm	Right	1	H
7246-4612*	12H, 163mm	Right	0	H
7246-4615*	15H, 196mm	Right	0	H

\*Sterile only



# EVOS<sup>®</sup> SMALL Proximal Tibia Plate Tray



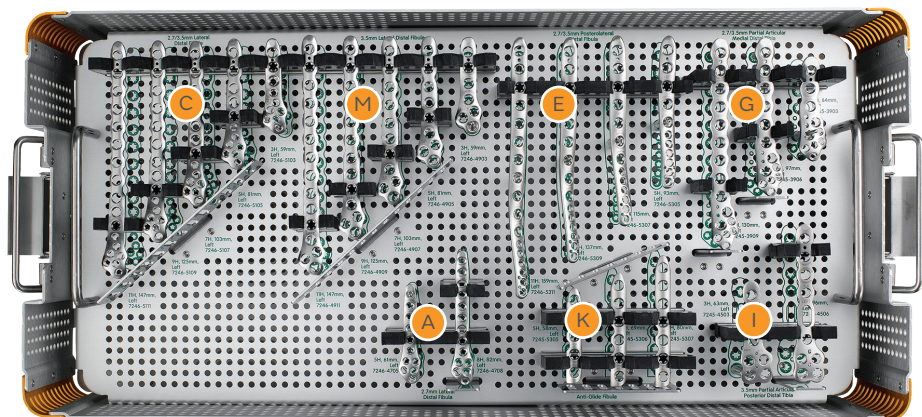
Cat no	Description	Orientation	Qty	Ref
<b>3.5mm Lateral Proximal Tibia, partial articular</b>				
7245-3104	4H, 70mm	Left	1	A
7245-3106	6H, 91mm	Left	1	A
<b>3.5mm Lateral Proximal Tibia</b>				
7246-3104	4H, 70mm	Left	1	C
7246-3106	6H, 91mm	Left	1	C
7246-3108	8H, 113mm	Left	1	C
7246-3110	10H, 134mm	Left	1	C
7246-3113	13H, 167mm	Left	1	C
7246-3116	16H, 200mm	Left	1	C
7246-3118*	18H, 221mm	Left	0	C
7246-3120*	20H, 243mm	Left	0	C
7246-3122*	22H, 265mm	Left	0	C
7246-3124*	24H, 287mm	Left	0	C

Cat no	Description	Orientation	Qty	Ref
<b>3.5mm Posteromedial Proximal Tibia "T", partial articular</b>				
7245-3304	4H, 71mm	Left	1	E
7245-3307	7H, 103mm	Left	1	E
<b>3.5mm Posteromedial Proximal Tibia "T"</b>				
7246-3307	7H, 104mm	Left	1	G
7246-3310*	10H, 137mm	Left	0	G
7246-3313*	13H, 170mm	Left	0	G
<b>3.5mm Posteromedial Proximal Tibia "I", partial articular</b>				
7245-3505	5H, 78mm	Left	1	I
7245-3508	8H, 111mm	Left	1	I
<b>3.5mm Lateral Proximal Tibia, partial articular</b>				
7245-3204	4H, 70mm	Right	1	B
7245-3206	6H, 91mm	Right	1	B
<b>3.5mm Posteromedial Proximal Tibia "T"</b>				
7246-3407	7H, 104mm	Right	1	H
7246-3410*	10H, 137mm	Right	0	H
7246-3413*	13H, 170mm	Right	0	H

Cat no	Description	Orientation	Qty	Ref
<b>3.5mm Lateral Proximal Tibia</b>				
7246-3204	4H, 70mm	Right	1	D
7246-3206	6H, 91mm	Right	1	D
7246-3208	8H, 113mm	Right	1	D
7246-3210	10H, 134mm	Right	1	D
7246-3213	13H, 167mm	Right	1	D
7246-3216	16H, 200mm	Right	1	D
7246-3218*	18H, 221mm	Right	0	D
7246-3220*	20H, 243mm	Right	0	D
7246-3222*	22H, 265mm	Right	0	D
7246-3224*	24H, 287mm	Right	0	D
<b>3.5mm Posteromedial Proximal Tibia "T", partial articular</b>				
7245-3404	4H, 71mm	Right	1	F
7245-3407	7H, 103mm	Right	1	F
<b>3.5mm Posteromedial Proximal Tibia "I", partial articular</b>				
7245-3605	5H, 78mm	Right	1	J
7245-3608	8H, 111mm	Right	1	J

\*Sterile only

# EVOS<sup>®</sup> SMALL Ankle Plate Tray



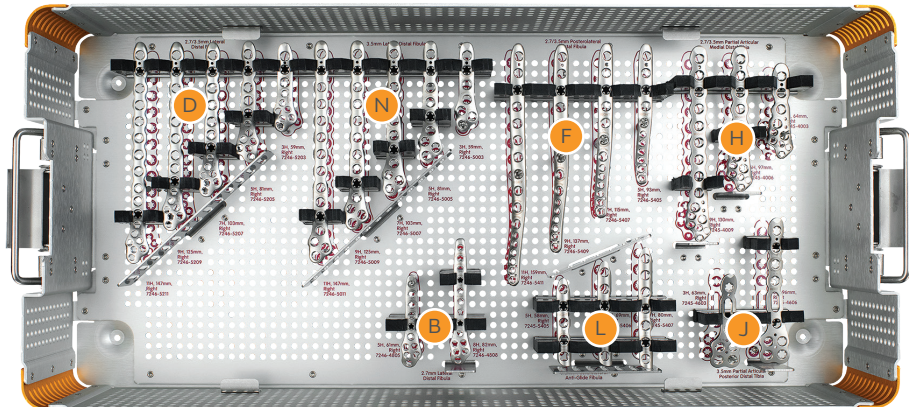
Cat no	Description	Orientation	Qty	Ref
<b>2.7mm Lateral Distal Fibula</b>				
7246-4705	5H, 61mm	Left	1	A
7246-4708	8H, 82mm	Left	1	A
7246-4711*	11H, 103mm	Left	0	A
<b>2.7/3.5mm Lateral Distal Fibula</b>				
7246-5103	3H, 59mm	Left	1	C
7246-5105	5H, 81mm	Left	1	C
7246-5107	7H, 103mm	Left	1	C
7246-5109	9H, 125mm	Left	1	C
7246-5111	11H, 147mm	Left	1	C
7246-5113*	13H, 169mm	Left	0	C
7246-5116*	16H, 202mm	Left	0	C

Cat no	Description	Orientation	Qty	Ref
<b>2.7/3.5mm Posterolateral Distal Fibula</b>				
7246-5305	9H, 130mm	Left	1	E
7246-5307	12H, 162mm	Left	1	E
7246-5309	15H, 195mm	Left	1	E
7246-5311	18H, 228mm	Left	1	E
7246-5314*	21H, 261mm	Left	0	E
<b>2.7/3.5mm Medial Distal Tibia, partial articular</b>				
7245-3903	3H, 64mm	Left	1	G
7245-3906	6H, 97mm	Left	1	G
7245-3909	9H, 130mm	Left	1	G
<b>3.5mm Posterior Distal Tibia, partial articular</b>				
7245-4503	3H, 63mm	Left	1	I
7245-4506	6H, 96mm	Left	1	I

Cat no	Description	Orientation	Qty	Ref
<b>3.5mm Posterolateral Distal Fibula, anti-glide</b>				
7245-5305	5H, 58mm	Left	1	K
7245-5306	6H, 69mm	Left	1	K
7245-5307	7H, 80mm	Left	1	K
<b>3.5mm Lateral Distal Fibula</b>				
7246-4903	3H, 59mm	Left	1	M
7246-4905	5H, 81mm	Left	1	M
7246-4907	7H, 103mm	Left	1	M
7246-4909	9H, 125mm	Left	1	M
7246-4911	11H, 147mm	Left	1	M
7246-4913*	13H, 169mm	Left	0	M
7246-4916*	16H, 202mm	Left	0	M

\*Sterile only

# EVOS<sup>◇</sup> SMALL Ankle Plate Tray



**Cat no Description Orientation Qty Ref**

## 2.7mm Lateral Distal Fibula

7246-4805	5H, 61mm	Right	1	B
7246-4808	8H, 82mm	Right	1	B
7246-4811*	11H, 103mm	Right	0	B

## 2.7/3.5mm Lateral Distal Fibula

7246-5203	3H, 59mm	Right	1	D
7246-5205	5H, 81mm	Right	1	D
7246-5207	7H, 103mm	Right	1	D
7246-5209	9H, 125mm	Right	1	D
7246-5211	11H, 147mm	Right	1	D
7246-5213*	13H, 169mm	Right	0	D
7246-5216*	16H, 202mm	Right	0	D

## 2.7/3.5mm Posterolateral Distal Fibula

7246-5405	5H, 93mm	Right	1	F
7246-5407	7H, 115mm	Right	1	F
7246-5409	9H, 137mm	Right	1	F
7246-5411	11H, 159mm	Right	1	F
7246-5414*	14H, 192mm	Right	0	F

**Cat no Description Orientation Qty Ref**

## 2.7/3.5mm Medial Distal Tibia, partial articular

7245-4003	3H, 64mm	Right	1	H
7245-4006	6H, 97mm	Right	1	H
7245-4009	9H, 130mm	Right	1	H

## 3.5mm Posterior Distal Tibia, partial articular

7245-4603	3H, 63mm	Right	1	J
7245-4606	6H, 96mm	Right	1	J

## 3.5mm Posterolateral Distal Fibula, anti-glide

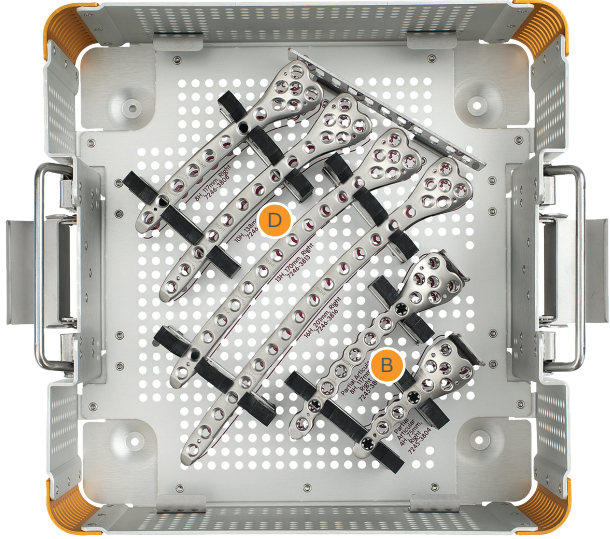
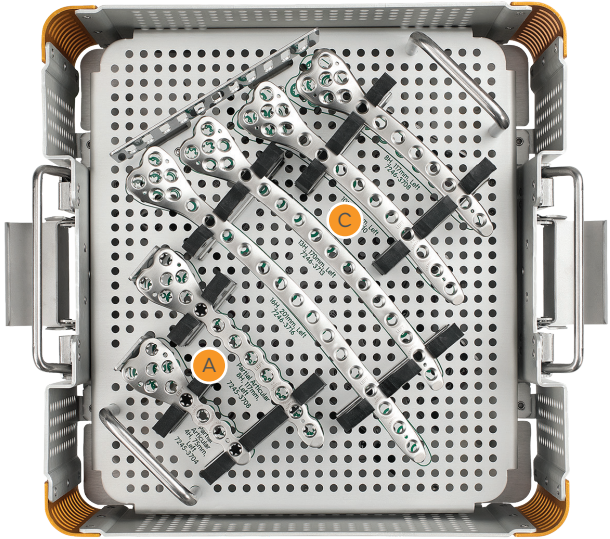
7245-5405	5H, 58mm	Right	1	L
7245-5406	6H, 69mm	Right	1	L
7245-5407	7H, 80mm	Right	1	L

## 3.5mm Lateral Distal Fibula

7246-5003	3H, 59mm	Right	1	N
7246-5005	5H, 81mm	Right	1	N
7246-5007	7H, 103mm	Right	1	N
7246-5009	9H, 125mm	Right	1	N
7246-5011	11H, 147mm	Right	1	N
7246-5013*	13H, 169mm	Right	0	N
7246-5016*	16H, 202mm	Right	0	N

\*Sterile only

# EVOS<sup>◇</sup> SMALL Medial Proximal Tibia Tray



**Cat no      Description      Orientation      Qty      Ref**

**2.7/3.5mm Medial Proximal Tibia, partial articular**

7245-3704	9H, 130mm	Left	1	A
7245-3708	12H, 162mm	Left	1	A

**2.7/3.5mm Medial Proximal Tibia**

7246-3708	8H, 117mm	Left	1	C
7246-3710	10H, 170mm	Left	1	C
7246-3713	13H, 170mm	Left	1	C
7246-3716	16H, 201mm	Left	1	C

**Cat no      Description      Orientation      Qty      Ref**

**2.7/3.5mm Medial Proximal Tibia, partial articular**

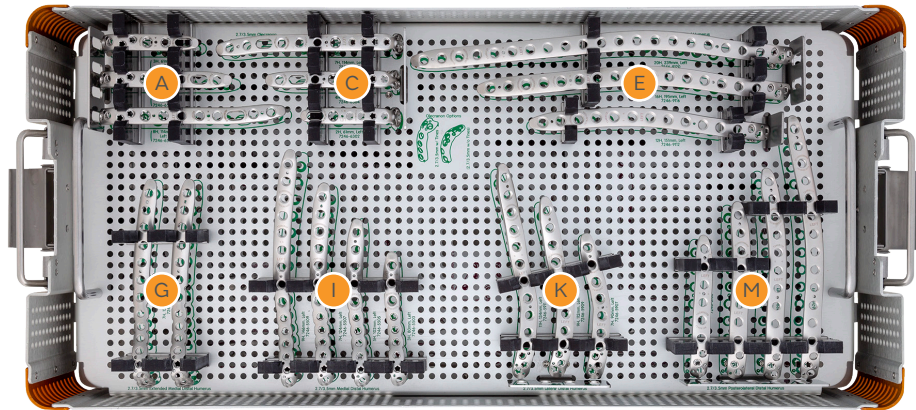
7245-3804	4H, 75mm	Left	1	B
7245-3808	8H, 117mm	Left	1	B

**2.7/3.5mm Medial Proximal Tibia**

7246-3808	8H, 117mm	Left	1	D
7246-3810	10H, 138mm	Left	1	D
7246-3813	13H, 170mm	Left	1	D
7246-3816	16H, 201mm	Left	1	D

\*Sterile only

# EVOS<sup>◇</sup> SMALL Elbow Plate Tray - Left

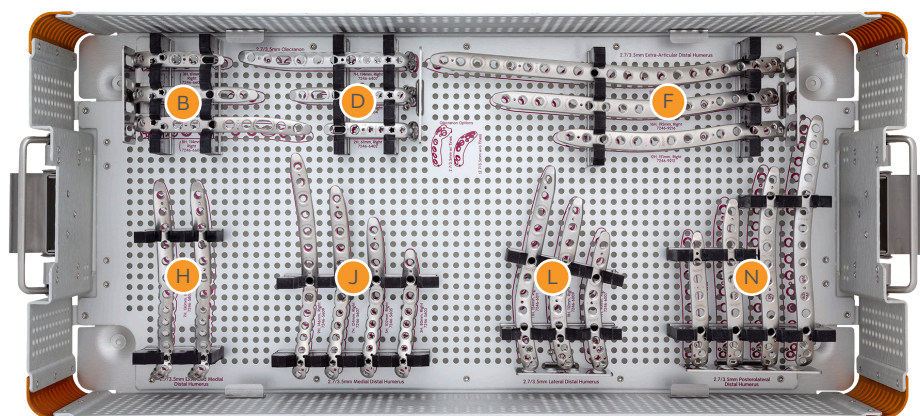


Cat no	Description	Orientation	Qty	Ref
<b>Olecranon (Add-on Set 71410273N)</b>				
7246-6503	3H, 61mm	Left	1	A
7246-6505	5H, 83mm	Left	1	A
7246-6508	8H, 114mm	Left	1	A
<b>Olecranon with tines (Add-on Set 71410273N)</b>				
7246-6302	2H, 61mm	Left	0	C
7246-6304	4H, 82mm	Left	0	C
7246-6307	7H, 114mm	Left	0	C
<b>Extra articular Posterolateral Distal Humerus</b>				
7246-9112	12H, 151mm	Left	1	E
7246-9116	16H, 195mm	Left	1	E
7246-9120	20H, 239mm	Left	1	E
7246-9125*	25H, 294mm	Left	0	E
<b>Extended Medial Distal Humerus</b>				
7246-5707*	7H, 130mm	Left	0	G

Cat no	Description	Orientation	Qty	Ref
<b>Medial Distal Humerus</b>				
7246-5503	3H, 80mm	Left	1	I
7246-5505	5H, 102mm	Left	1	I
7246-5507	7H, 124mm	Left	1	I
7246-5509	9H, 146mm	Left	1	I
7246-5512*	12H, 179mm	Left	0	I
<b>Lateral Distal Humerus</b>				
7246-5907	7H, 90mm	Left	1	K
7246-5909	9H, 112mm	Left	1	K
7246-5911	11H, 134mm	Left	1	K
7246-5913*	13H, 156mm	Left	0	K
<b>Posterolateral Distal Humerus</b>				
7246-6106	6H, 85mm	Left	1	M
7246-6108	8H, 107mm	Left	1	M
7246-6110	10H, 129mm	Left	1	M
7246-6113	13H, 162mm	Left	1	M
7246-6117*	17H, 206mm	Left	0	M

\*Sterile only

# EVOS<sup>®</sup> SMALL Elbow Plate Tray - Right

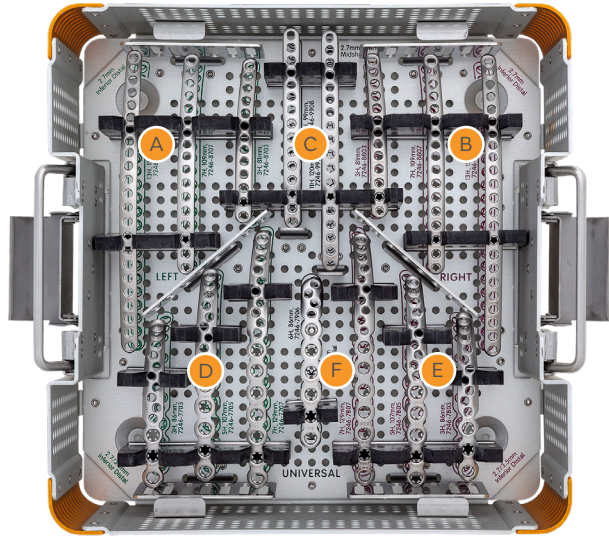


Cat no	Description	Orientation	Qty	Ref
<b>Olecranon (Add-on set 71410273N)</b>				
7246-6603	3H, 61mm	Right	1	B
7246-6605	5H, 83mm	Right	1	B
7246-6608	8H, 114mm	Right	1	B
<b>Olecranon with tines (Add-on set 71410274N)</b>				
7246-6402*	2H, 61mm	Right	1	D
7246-6404*	4H, 82mm	Right	1	D
7246-6407*	7H, 114mm	Right	1	D
<b>Extra articular Posterolateral Distal Humerus</b>				
7246-9212	12H, 151mm	Right	1	F
7246-9216	16H, 195mm	Right	1	F
7246-9220	20H, 239mm	Right	1	F
7246-9225*	25H, 294mm	Right	0	F
<b>Extended Medial Distal Humerus</b>				
7246-5807*	7H, 130mm	Right	0	H

Cat no	Description	Orientation	Qty	Ref
<b>Medial Distal Humerus</b>				
7246-5603	3H, 80mm	Right	1	J
7246-5605	5H, 102mm	Right	1	J
7246-5607	7H, 124mm	Right	1	J
7246-5609	9H, 146mm	Right	1	J
7246-5612*	12H, 179mm	Right	0	J
<b>Lateral Distal Humerus</b>				
7246-6007	7H, 90mm	Right	1	L
7246-6009	9H, 112mm	Right	1	L
7246-6011	11H, 134mm	Right	1	L
7246-6013*	13H, 156mm	Right	0	L
<b>Posterolateral Distal Humerus</b>				
7246-6206	6H, 85mm	Right	1	N
7246-6208	8H, 107mm	Right	1	N
7246-6210	10H, 129mm	Right	1	N
7246-6213	13H, 162mm	Right	1	N
7246-6217*	17H, 206mm	Right	0	N

\*Sterile only

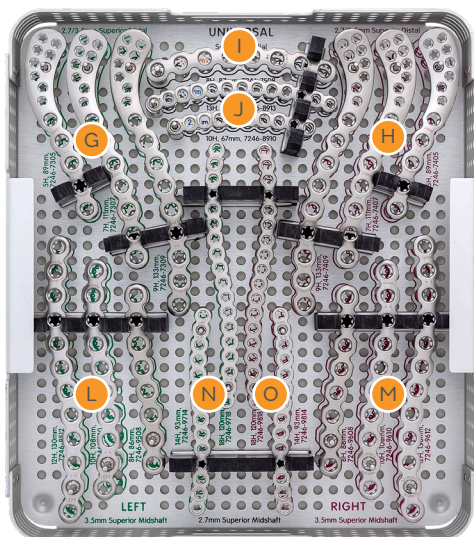
# EVOS <sup>◇</sup> SMALL Clavicle Plate Tray



Cat no	Description	Orientation	Qty	Ref
<b>2.7mm Inferior Distal Clavicle</b>				
7246-8703	3H, 81mm	Left	1	A
7246-8707	7H, 116mm	Left	1	A
7246-8713	13H, 151mm	Left	1	A
7246-8803	3H, 81mm	Right	1	B
7246-8807	7H, 116mm	Right	1	B
7246-8813	13H, 151mm	Right	1	B
<b>2.7mm Inferior Midshaft Clavicle</b>				
7246-9908	8H, 99mm	N/A	1	C
7246-9911	11H, 120mm	N/A	1	C
<b>2.7/3.5mm Inferior Distal Clavicle</b>				
7246-7703	3H, 86mm	Left	1	D
7246-7705	5H, 107mm	Left	1	D
7246-7707	7H, 129mm	Left	1	D
7246-7709*	9H, 151mm	Left	0	D
7246-7803	3H, 86mm	Right	1	E
7246-7805	5H, 107mm	Right	1	E
7246-7807	7H, 129mm	Right	1	E
7246-7809*	9H, 151mm	Right	0	E
<b>2.7/3.5mm Inferior Medial Clavicle</b>				
7246-7906	6H, 86mm	N/A	1	F
7246-7909*	9H, 115mm	N/A	0	F

\*Sterile only

# EVOS<sup>®</sup> SMALL Clavicle Plate Tray (continued)



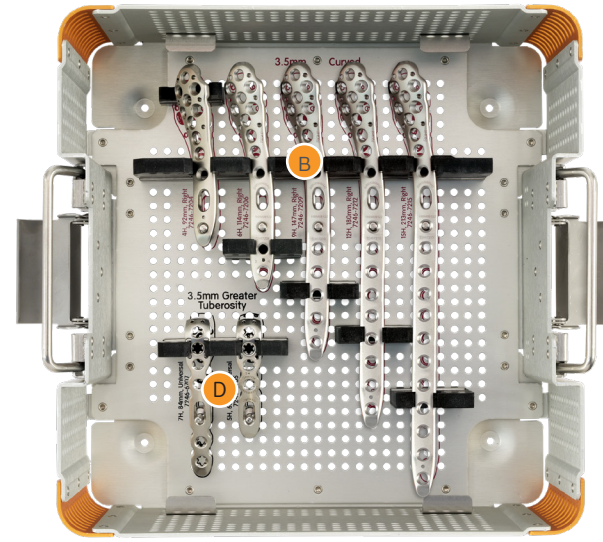
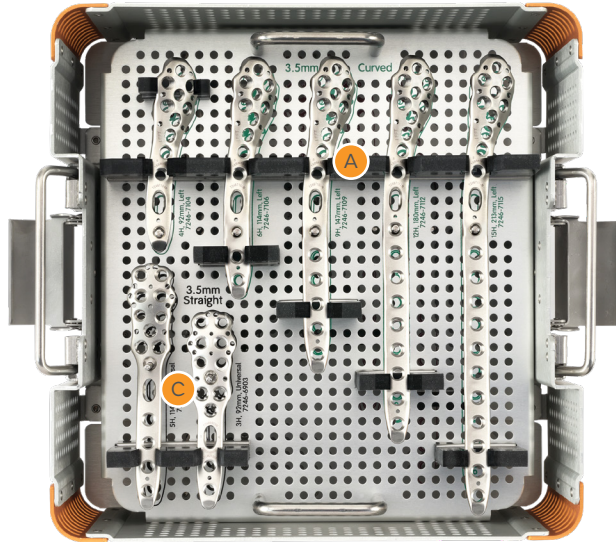
Cat no	Description	Orientation	Qty	Ref
<b>2.7/3.5mm Superior Distal Clavicle</b>				
7246-7305	5H, 89mm	Left	1	G
7246-7307	7H, 11mm	Left	1	G
7246-7309	9H, 133mm	Left	1	G
7246-7311*	11H, 154mm	Left	0	G
7246-7405	5H, 89mm	Right	1	H
7246-7407	7H, 111mm	Right	1	H
7246-7409	9H, 133mm	Right	1	H
7246-7411*	11H, 154mm	Right	0	H
<b>3.5mm Superior Medial Clavicle</b>				
7246-7508	8H, 87mm	N/A	1	I
<b>2.7mm Superior Medial Clavicle</b>				
7246-8910	10H, 67mm	N/A	1	J
7246-8913	13H, 87mm	N/A	1	J

Cat no	Description	Orientation	Qty	Ref
<b>3.5mm Superior Midshaft Clavicle</b>				
7246-9508	8H, 86mm	Left	1	L
7246-9509*	9H, 97mm	Left	0	L
7246-9510	10H, 108 mm	Left	1	L
7246-9512	12H, 130mm	Left	1	L
7246-9608	8H, 86mm	Right	1	M
7246-9609*	9H, 97mm	Right	0	M
7246-9610	10H, 108 mm	Right	1	M
7246-9612	12H, 130mm	Right	1	M
<b>2.7mm Superior Midshaft Clavicle</b>				
7246-9714	14H, 93mm	Left	1	N
7246-9716*	16H, 107mm	Left	0	N
7246-9718	18H, 120mm	Left	1	N
7246-9814	14H, 93mm	Right	1	O
7246-9816*	16H, 107mm	Right	0	O
7246-9818	18H, 120mm	Right	1	O

\*Sterile only



# EVOS<sup>®</sup> SMALL Proximal Humerus Plate Tray



Cat no Description Orientation Qty Ref

### 3.5mm Curved Proximal Humerus

7246-7104	4H, 92mm	Left	1	A
7246-7106	6H, 114mm	Left	1	A
7246-7109	9H, 147mm	Left	1	A
7246-7112	12H, 180mm	Left	1	A
7246-7115	15H, 213mm	Left	1	A
7246-7118*	18H, 246mm	Left	0	A

### 3.5mm Straight Lateral Proximal Humerus

7246-6903	3H, 92mm	N/A	1	C
7246-6905	5H, 114mm	N/A	1	C

Cat no Description Orientation Qty Ref

### 3.5mm Curved Proximal Humerus

7246-7204	4H, 92mm	Right	1	B
7246-7206	6H, 114mm	Right	1	B
7246-7209	9H, 147mm	Right	1	B
7246-7212	12H, 180mm	Right	1	B
7246-7215	15H, 213mm	Right	1	B
7246-7218*	18H, 246mm	Right	0	B

### 3.5mm Greater Tuberosity

7246-6705	5H, 62mm	N/A	1	D
7246-6707	7H, 84mm	N/A	1	D

\*Sterile only

# EVOS<sup>◇</sup> SMALL Ordering information

Cat no	Description	Qty
<b>Trays, lids and caddies</b>		
7117-0251	EVOS 3.5mm Size Specific Instrumentation Tray	1
7117-0250	EVOS 2.7mm Size Specific Instrumentation Tray	1
7117-0221	EVOS SMALL Frag Instrument Tray Lid	1
7117-0220	EVOS SMALL Frag Instrument Tray	1
7117-0222	EVOS SMALL Frag Implant Tray	1
7117-0223	EVOS SMALL Frag Implant Tray Lid	1
7117-0224	2.7/3.5mm Screw Caddy	1
7117-0225	2.7/3.5mm Screw Caddy Lid	1
7117-0238	Straight Plate Tray	1
7117-0239	Straight Plate Tray Lid	1



**Smith & Nephew, Inc.**  
1450 Brooks Road  
Memphis, Tennessee 38116  
USA

[www.smith-nephew.com](http://www.smith-nephew.com)

T (1) 901-396-2122  
F (1) 800-821-5700

◇ Trademark of Smith & Nephew  
©2020 Smith & Nephew, Inc.  
14628 V3 01/20