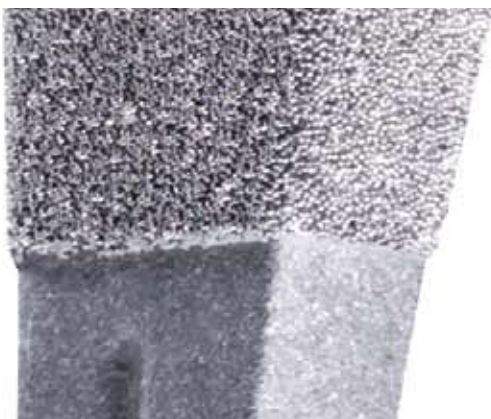




 smith&nephew
ANTHOLOGY[®]
Primary Hip System

The evolution of a proven design



The ANTHOLOGY[®] Hip System is an improvement on the designs of other clinically successful Müller “flat” tapered stem designs. We offer superior ROM, along with design features that will achieve excellent fit and rotational stability.

Superior Sizing

ANTHOLOGY Hip System offers the ability to match all femur types and sizes with more sizes than the competition, increasing in predictable 1.5mm increments. ANTHOLOGY stems also increase in size at a greater rate proximally than distally to ensure proximal loading.

Stem Comparisons			
Manufacturer	Product	Stem Sizes	Size Increase
Smith & Nephew	ANTHOLOGY	12 standard 3 optional	1.5mm
Stryker	Accolade	9 standard 4 optional	1.5 - 2.5mm
Zimmer	ML Taper	12	1.0 - 2.5mm
Biomet	Taperloc	13	1.5 - 2.5mm
DePuy	Trilock	9	1.25 - 2.5mm

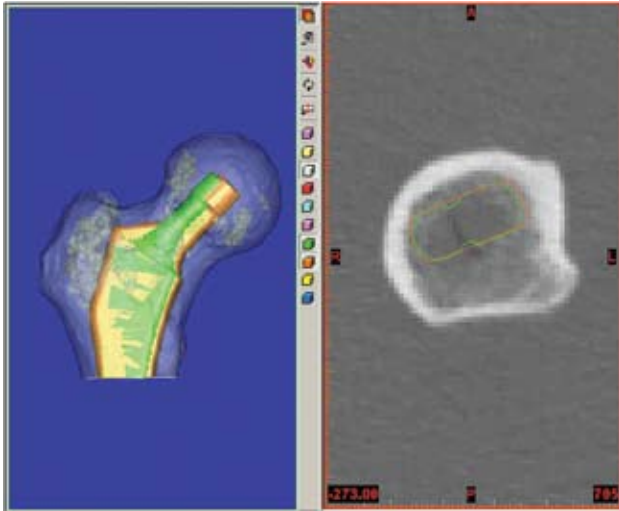
Superior ROM

With 144° of A/P ROM with a 32mm head ANTHOLOGY lessens the chance of neck impingement that can lead to dislocation.



Rotational Stability

The flattened medial surface of the ANTHOLOGY[®] stem creates corners that contact cortical bone, enhancing rotational stability.



ANTHOLOGY in orange.

Innovative Instrumentation

Not every surgical approach is the same, so not all instrumentation should be the same. With the ANTHOLOGY Hip System, surgeons are able to choose instruments specifically designed for the direct anterior approach.



Orthopaedics
Smith & Nephew, Inc.
1450 Brooks Road
Memphis, TN 38116
USA

Telephone: 1-901-396-2121
Information: 1-800-821-5700
Orders and Inquiries: 1-800-238-7538

*Trademark of Smith & Nephew. All Trademarks acknowledged.
For US Distribution Only.

Kontakt:
Smith & Nephew GmbH
Mainstraße 2
45768 Marl
T +49 (0)2365 91 81 0
F +49 (0)2365 91 81 10

www.smith-nephew.de

Bestellannahme
T 0800 664 75 78

©2005 Smith & Nephew, Inc.
Printed in USA
11/05 45860501