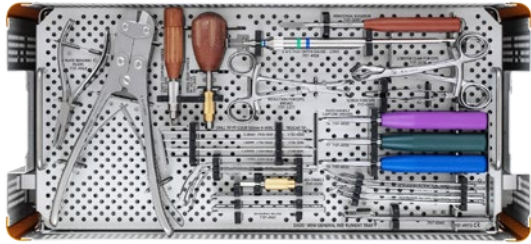


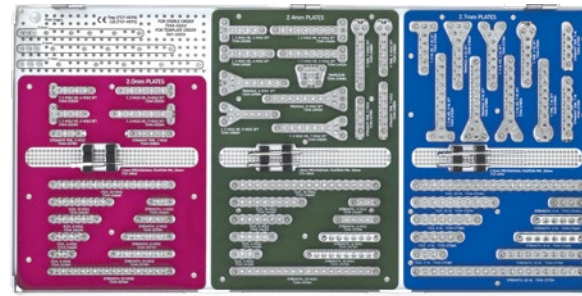
EVOS MINI Plating System Tray Layout



Exploded view



General Instrument Tray



2.0mm

2.4mm

2.7mm

Plate Tray



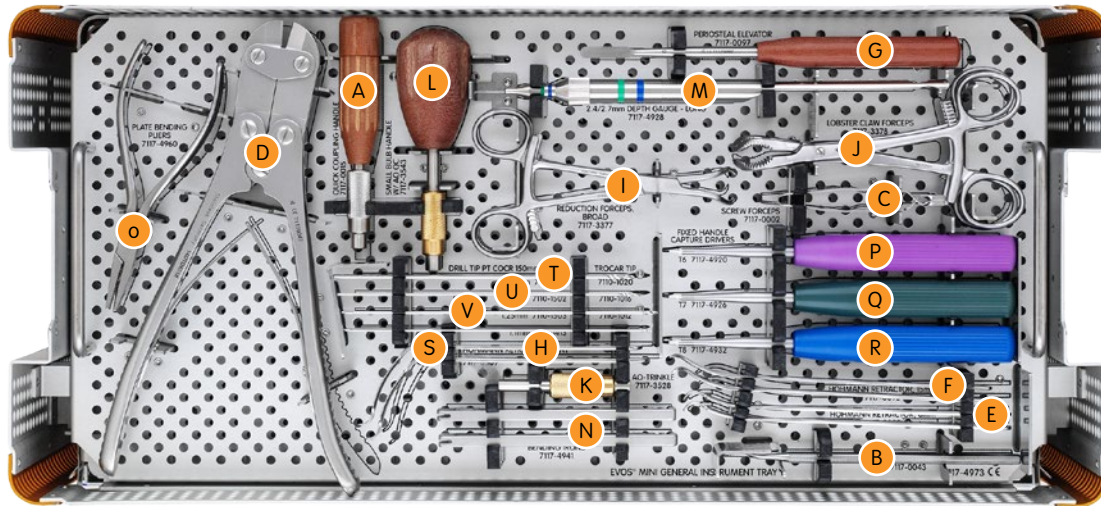
2.0mm Module

2.4mm Module

2.7mm Module



General Instrument Tray



Tray		
Cat. No.	Description	Qty
7117-4973	General Instrument Tray	1
7117-4974	Plate Tray	1
7117-4975	Plate Tray Lid	1
7117-4976	Instrument and Implant Set Case	1
7117-4977	Instrument and Implant Set Case Lid	1

General Instruments			
Cat. No.	Description	Qty	Reference
7117-0015	Quick Coupling Handle	1	A
7117-0043	Sharp Hook	1	B
7117-0045	Screw Forceps	1	C
7117-0047	Plate Cutting Forceps	1	D
7117-0055	Hohmann Retractor, 6mm	2	E
7117-0095	Hohmann Retractor, 15mm	2	F
7117-0097	Periosteal Elevator	1	G
7117-3369	Hohmann Retractor, Bent	2	H
7117-3377	Reduction Forceps with Points, Broad	2	I
7117-3378	Reduction Forceps, Serrated Jaw	2	J
7117-3528	Cannulated AO to Trinkle Adapter	1	K
7117-3543	Tear Drop Screwdriver Handle	1	L
7117-4928	2.4/2.7mm Depth Gauge, Long	1	M
7117-4941	Bending Irons	2	N
7117-4960	Plate Bending Pliers	1	O

Size Specific Instruments			
Cat. No.	Description	Qty	Reference
7117-4920	T6 Fixed Handle Driver	1	P
7117-4926	T7 Fixed Handle Driver	1	Q
7117-4932	T8 Fixed Handle Driver	1	R

Disposables			
Cat. No.	Description	Qty	Reference
7110-1413	1.1mm Drill Tip K-wire, 150mm	6	S
7110-1501	2.0mm Drill Tip K-wire, 150mm	6	T
7110-1502	1.6mm Drill Tip K-wire, 150mm	6	U
7110-1503	1.25mm Drill Tip K-wire, 150mm	6	V

Optional Disposables		
Cat. No.	Description	Qty
7116-1010	1.1mm Trocar Tip K-Wire, 150mm	0
7116-1012	1.25mm Trocar Tip K-wire, 150mm	0
7116-1016	1.6mm Trocar Tip K-wire, 150mm	0
7116-1020	2.0mm Trocar Tip K-wire, 150mm	0

Plate tray

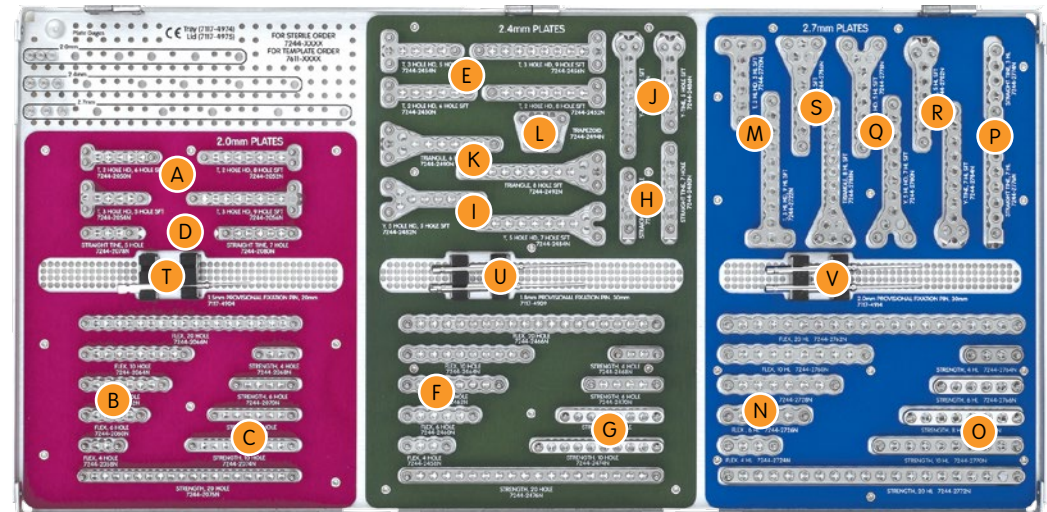
2.0mm T-Plate		
Cat. No.	Description	Qty
7117-4974	Plate Tray	1
7117-4975	Plate Tray Lid	1

2.0mm T-Plate				
Cat. No.	Description	Length	Qty	Reference
7244-2050N	2 Hole Head, 6H	36mm	1	A
7244-2052N	2 Hole Head, 8H	46mm	1	A
7244-2054N	3 Hole Head, 5H	31mm	1	A
7244-2056N	3 Hole Head, 9H	51mm	1	A

2.0mm Flex Plate				
Cat. No.	Description	Length	Qty	Reference
7244-2058N	4H	21mm	1	B
7244-2060N	6H	31mm	1	B
7244-2062N	8H	41mm	1	B
7244-2064N	10H	51mm	1	B
7244-2066N	20H	101mm	1	B

2.0mm Strength Plate				
Cat. No.	Description	Length	Qty	Reference
7244-2068N	4H	21mm	1	C
7244-2070N	6H	31mm	1	C
7244-2072N	8H	41mm	1	C
7244-2074N	10H	51mm	1	C
7244-2076N	20H	101mm	1	C

2.0mm Straight Tine Plate				
Cat. No.	Description	Length	Qty	Reference
7244-2078N	5H	28mm	1	D
7244-2080N	7H	38mm	1	D



2.0mm

2.4mm

2.7mm

2.4mm T-Plate				
Cat. No.	Description	Length	Qty	Reference
7244-2450N	2 Hole Head, 6H	43mm	1	E
7244-2452N	2 Hole Head, 8H	55mm	1	E
7244-2454N	3 Hole Head, 5H	37mm	1	E
7244-2456N	3 Hole Head, 9H	61mm	1	E

2.4mm Flex Plate				
Cat. No.	Description	Length	Qty	Reference
7244-2458N	4H	25mm	1	F
7244-2460N	6H	37mm	1	F
7244-2462N	8H	49mm	1	F
7244-2464N	10H	61mm	1	F
7244-2466N	20H	121mm	1	F

2.4mm Strength Plate				
Cat. No.	Description	Length	Qty	Reference
7244-2468N	4H	25mm	1	G
7244-2470N	6H	37mm	1	G
7244-2472N	8H	49mm	1	G
7244-2474N	10H	61mm	1	G
7244-2476N	20H	121mm	1	G

Plate tray

2.4mm Straight Tine Plate

Cat. No.	Description	Length	Qty	Reference
7244-2478N	5H	34mm	1	H
7244-2480N	7H	46mm	1	H

2.4mm Y-Plate

Cat. No.	Description	Length	Qty	Reference
7244-2482N	5H	47mm	1	I
7244-2484N	7H	59mm	1	I

2.4mm Y-Tine Plate

Cat. No.	Description	Length	Qty	Reference
7244-2486N	5H	45mm	1	J
7244-2488N	7H	57mm	1	J

2.4mm Triangle Plate

Cat. No.	Description	Length	Qty	Reference
7244-2490N	6H	55mm	1	K
7244-2492N	8H	67mm	1	K

2.4mm Trapezoid Plate

Cat. No.	Description	Length	Qty	Reference
7244-2494N	Trapezoid Plate	24mm x 18mm	1	L

2.7mm T-Plate

Cat. No.	Description	Length	Qty	Reference
7244-2720N	3 Hole Head, 5H	42mm	1	M
7244-2722N	3 Hole Head, 9H	71mm	1	M

2.7mm Flex Plate

Cat. No.	Description	Length	Qty	Reference
7244-2724N	4H	28mm	1	N
7244-2726N	6H	42mm	1	N
7244-2728N	8H	56mm	1	N
7244-2760N	10H	70mm	1	N
7244-2762N	20H	140mm	1	N

2.7mm Strength Plate

Cat. No.	Description	Length	Qty	Reference
7244-2764N	4H	28mm	1	O
7244-2766N	6H	42mm	1	O
7244-2768N	8H	56mm	1	O
7244-2770N	10H	70mm	1	O
7244-2772N	20H	140mm	1	O

2.7mm Straight Tine Plate

Cat. No.	Description	Length	Qty	Reference
7244-2774N	5H	38mm	1	P
7244-2776N	7H	52mm	1	P

2.7mm Y-Plate

Cat. No.	Description	Length	Qty	Reference
7244-2778N	5H	55mm	1	Q
7244-2780N	7H	69mm	1	Q

2.7mm Y-Tine Plate

Cat. No.	Description	Length	Qty	Reference
7244-2782N	5H	52mm	1	R
7244-2784N	7H	66mm	1	R

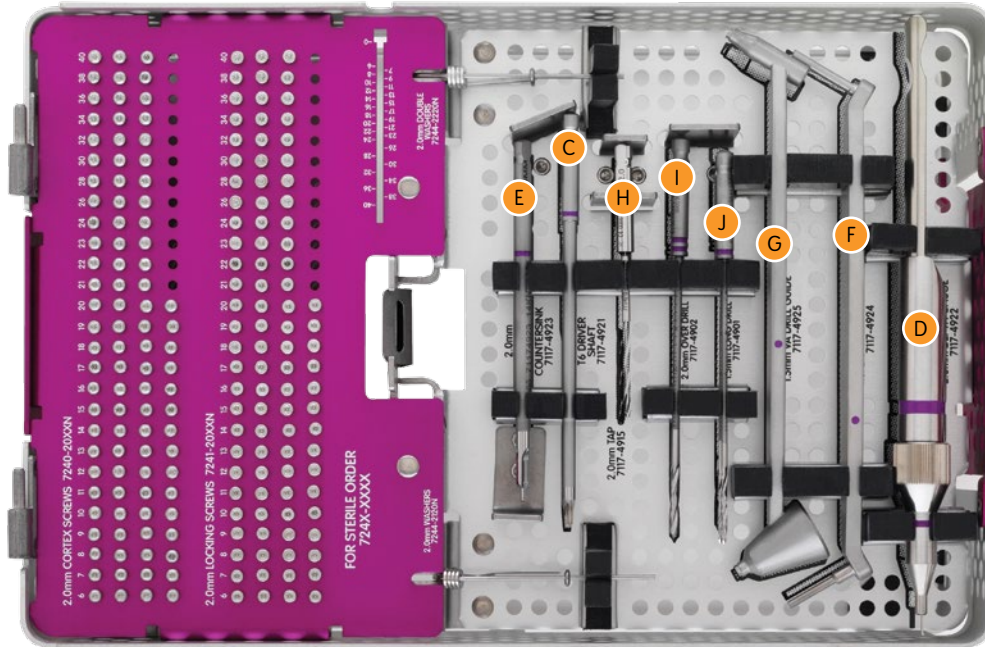
2.7mm Triangle Plate

Cat. No.	Description	Length	Qty	Reference
7244-2786N	6H	54mm	1	S
7244-2788N	8H	68mm	1	S

Disposables

Cat. No.	Description	Length	Qty	Reference
7117-4904	1.5mm Provisional Fixation Pin	20mm	2	T
7117-4909	1.8mm Provisional Fixation Pin	30mm	2	U
7117-4914	2.0mm Provisional Fixation Pin	30mm	2	V

2.0mm Screw and Size Specific Instrumentation Module



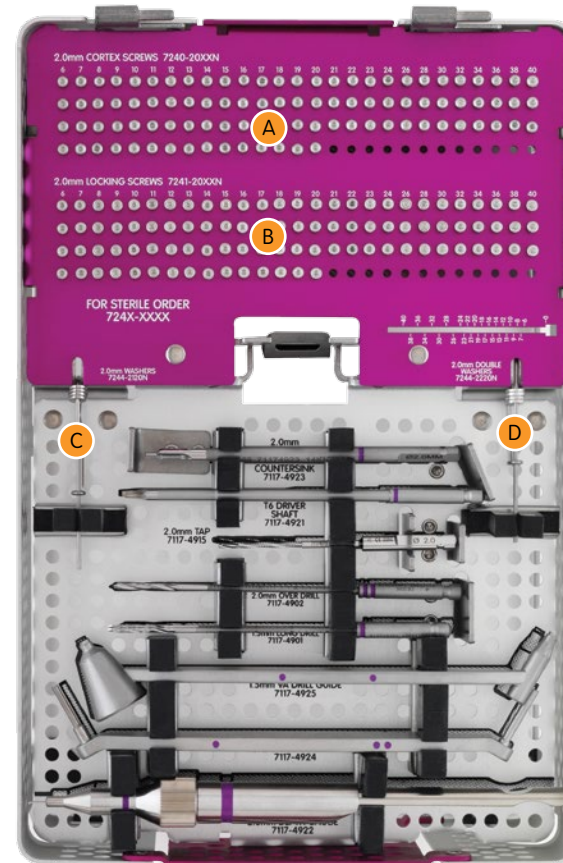
2.0mm Module			
Cat. No.	Description	Qty	Reference
7117-4978	2.0mm Screw and Instrument Caddy	1	A
7117-4979	2.0mm Screw and Instrument Caddy Lid	1	B
7117-4921	T6 Driver Shaft w/AO QC	2	C
7117-4922	2.0mm Depth Gauge	1	D
7117-4923	2.0mm Countersink w/AO QC	1	E
7117-4924	1.5/2.0mm Drill Guide	1	F
7117-4925	1.5mm Variable Angle Drill Guide	1	G

Disposables			
Cat. No.	Description	Qty	Reference
7117-4915	2.0mm Tap w/AO QC	1	H
7117-4902	2.0mm Over Drill w/AO QC	1	I
7117-4901	1.5mm Drill w/AO QC	2	J

2.0mm Screw and Size Specific Instrumentation Module

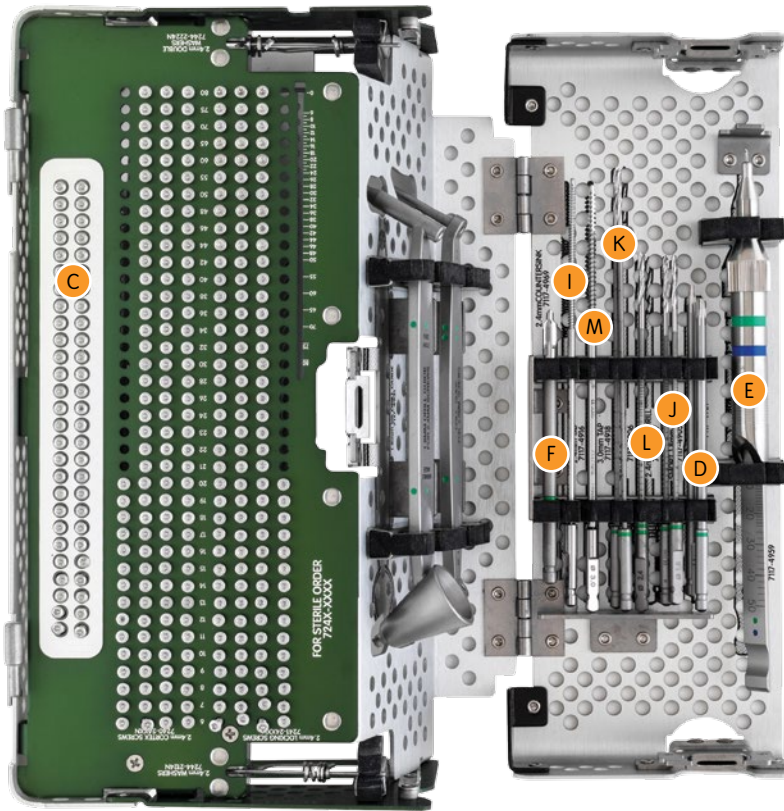
2.0mm Cortex Screw			
Cat. No.	Length	Qty	Reference
7240-2006N	6mm	4	A
7240-2007N	7mm	4	A
7240-2008N	8mm	4	A
7240-2009N	9mm	4	A
7240-2010N	10mm	4	A
7240-2011N	11mm	4	A
7240-2012N	12mm	4	A
7240-2013N	13mm	4	A
7240-2014N	14mm	4	A
7240-2015N	15mm	4	A
7240-2016N	16mm	4	A
7240-2017N	17mm	4	A
7240-2018N	18mm	4	A
7240-2019N	19mm	4	A
7240-2020N	20mm	4	A
7240-2021N	21mm	3	A
7240-2022N	22mm	3	A
7240-2023N	23mm	3	A
7240-2024N	24mm	3	A
7240-2026N	26mm	3	A
7240-2028N	28mm	3	A
7240-2030N	30mm	3	A
7240-2032N	32mm	3	A
7240-2034N	34mm	3	A
7240-2036N	36mm	3	A
7240-2038N	38mm	3	A
7240-2040N	40mm	3	A

2.0mm Locking Screw			
Cat. No.	Length	Qty	Reference
7241-2006N	6mm	4	B
7241-2007N	7mm	4	B
7241-2008N	8mm	4	B
7241-2009N	9mm	4	B
7241-2010N	10mm	4	B
7241-2011N	11mm	4	B
7241-2012N	12mm	4	B
7241-2013N	13mm	4	B
7241-2014N	14mm	4	B
7241-2015N	15mm	4	B
7241-2016N	16mm	4	B
7241-2017N	17mm	4	B
7241-2018N	18mm	4	B
7241-2019N	19mm	4	B
7241-2020N	20mm	4	B
7241-2021N	21mm	3	B
7241-2022N	22mm	3	B
7241-2023N	23mm	3	B
7241-2024N	24mm	3	B
7241-2026N	26mm	3	B
7241-2028N	28mm	3	B
7241-2030N	30mm	3	B
7241-2032N	32mm	3	B
7241-2034N	34mm	3	B
7241-2036N	36mm	3	B
7241-2038N	38mm	3	B
7241-2040N	40mm	3	B



Washers				
Cat. No.	Description	Diameter	Qty	Reference
7244-2120N	Washer for 2.0mm Screws	5mm	4	C
7244-2224N	Double Washer for 2.0mm Screws	10mm	4	D

2.4mm Screw and Size Specific Instrumentation Module



2.4mm Module

Cat. No.	Description	Qty	Reference
7117-4980	2.4mm Screw and Instrument Caddy	1	A
7117-4981	2.4mm Screw and Instrument Caddy Lid	1	B
7117-4971	3.0mm Osteopenia Screw Caddy	1	C
7117-4927	T7 Driver Shaft w/AO QC	2	D
7117-4959	2.4/2.7mm Depth Gauge	1	E
7117-4969	2.4mm Countersink w/AO QC	1	F
7117-4930	1.8/2.4mm Drill Guide	1	G
7117-4931	1.8mm Variable Angle Drill Guide	1	H

Disposables

Cat. No.	Description	Qty	Reference
7117-4916	2.4mm Tap w/AO QC	1	I
7117-4905	1.8mm Short Drill w/AO QC	2	J
7117-4906	1.8mm Long Drill w/AO QC	2	K
7117-4907	2.4mm Over Drill w/AO QC	1	L
7117-4918	3.0mm Tap w/AO QC	1	M

2.4mm Screw and Size Specific Instrumentation Module

2.4mm Cortex Screw

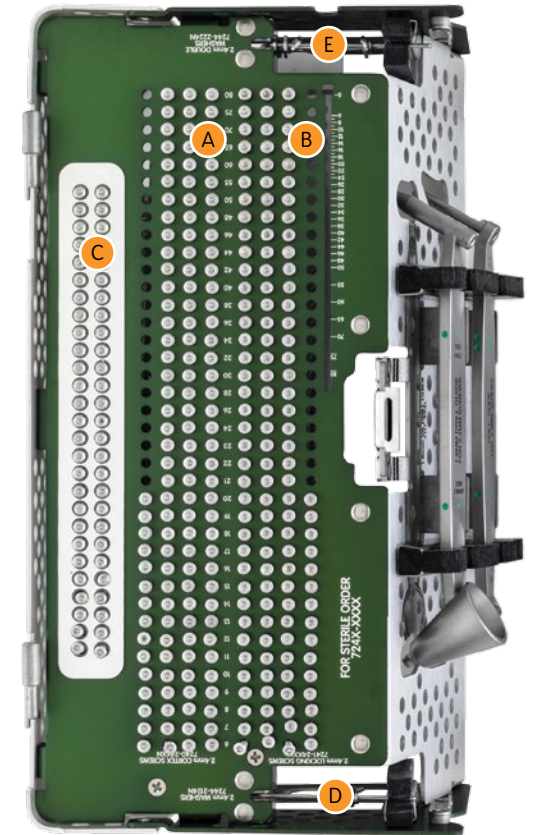
Cat. No.	Length	Qty	Reference
7240-2406N	6mm	4	A
7240-2407N	7mm	4	A
7240-2408N	8mm	4	A
7240-2409N	9mm	4	A
7240-2410N	10mm	4	A
7240-2411N	11mm	4	A
7240-2412N	12mm	4	A
7240-2413N	13mm	4	A
7240-2414N	14mm	4	A
7240-2415N	15mm	4	A
7240-2416N	16mm	4	A
7240-2417N	17mm	4	A
7240-2418N	18mm	4	A
7240-2419N	19mm	4	A
7240-2420N	20mm	4	A
7240-2421N	21mm	3	A
7240-2422N	22mm	3	A
7240-2423N	23mm	3	A
7240-2424N	24mm	3	A
7240-2426N	26mm	3	A
7240-2428N	28mm	3	A
7240-2430N	30mm	3	A
7240-2432N	32mm	3	A
7240-2434N	34mm	3	A
7240-2436N	36mm	3	A
7240-2438N	38mm	3	A
7240-2440N	40mm	3	A
7240-2442N	42mm	3	A
7240-2444N	44mm	3	A
7240-2446N	46mm	3	A
7240-2448N	48mm	3	A
7240-2450N	50mm	3	A
7240-2455N	55mm	3	A
7240-2460N	60mm	3	A
7240-2465N	65mm	3	A
7240-2470N	70mm	3	A
7240-2475N	75mm	3	A
7240-2480N	80mm	3	A

2.4mm Locking Screw

Cat. No.	Length	Qty	Reference
7241-2406N	6mm	4	B
7241-2407N	7mm	4	B
7241-2408N	8mm	4	B
7241-2409N	9mm	4	B
7241-2410N	10mm	4	B
7241-2411N	11mm	4	B
7241-2412N	12mm	4	B
7241-2413N	13mm	4	B
7241-2414N	14mm	4	B
7241-2415N	15mm	4	B
7241-2416N	16mm	4	B
7241-2417N	17mm	4	B
7241-2418N	18mm	4	B
7241-2419N	19mm	4	B
7241-2420N	20mm	4	B
7241-2421N	21mm	3	B
7241-2422N	22mm	3	B
7241-2423N	23mm	3	B
7241-2424N	24mm	3	B
7241-2426N	26mm	3	B
7241-2428N	28mm	3	B
7241-2430N	30mm	3	B
7241-2432N	32mm	3	B
7241-2434N	34mm	3	B
7241-2436N	36mm	3	B
7241-2438N	38mm	3	B
7241-2440N	40mm	3	B
7241-2442N	42mm	3	B
7241-2444N	44mm	3	B
7241-2446N	46mm	3	B
7241-2448N	48mm	3	B
7241-2450N	50mm	3	B
7241-2455N	55mm	3	B
7241-2460N	60mm	3	B
7241-2465N	65mm	3	B
7241-2470N	70mm	3	B
7241-2475N	75mm	3	B
7241-2480N	80mm	3	B

3.0mm Osteopenia Screw

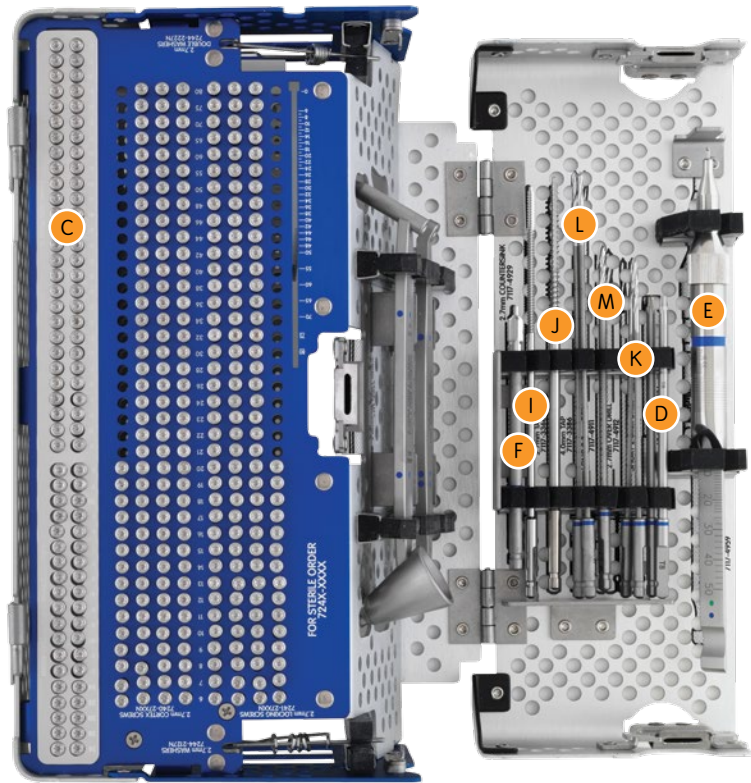
Cat. No.	Length	Qty	Reference
7242-3010N	10mm	2	C
7242-3012N	12mm	2	C
7242-3014N	14mm	2	C
7242-3016N	16mm	2	C
7242-3018N	18mm	2	C
7242-3020N	20mm	2	C
7242-3022N	22mm	2	C
7242-3024N	24mm	2	C
7242-3026N	26mm	2	C
7242-3028N	28mm	2	C
7242-3030N	30mm	2	C
7242-3032N	32mm	2	C
7242-3034N	34mm	2	C
7242-3036N	36mm	2	C
7242-3038N	38mm	2	C
7242-3040N	40mm	2	C
7242-3042N	42mm	2	C
7242-3044N	44mm	2	C
7242-3046N	46mm	2	C
7242-3048N	48mm	2	C
7242-3050N	50mm	2	C
7242-3055N	55mm	2	C
7242-3060N	60mm	2	C
7242-3065N	65mm	2	C
7242-3070N	70mm	2	C
7242-3075N	75mm	2	C
7242-3080N	80mm	2	C



Washers

Cat. No.	Description	Diameter	Qty	Reference
7244-2220N	Washer for 2.4mm Screws	6mm	4	D
7244-2127N	Double Washer for 2.4mm Screws	11mm	4	E

2.7mm Screw and Size Specific Instrumentation Module



2.7mm Module

Cat. No.	Description	Qty	Reference
7117-4982	2.7mm Screw and Instrument Caddy	1	A
7117-4983	2.7mm Screw and Instrument Caddy Lid	1	B
7117-4972	4.0mm Osteopenia Screw Caddy	1	C
7117-4933	T8 Driver Shaft w/AO QC	2	D
7117-4959	2.4/2.7mm Depth Gauge	1	E
7117-4929	2.7mm Countersink w/AO QC	1	F
7117-4934	2.0/2.7mm Drill Guide	1	G
7117-4935	2.0mm Variable Angle Drill Guide	1	H

Disposables

Cat. No.	Description	Qty	Reference
7117-3366	2.7mm Tap w/AO QC	1	I
7117-3386	4.0mm Tap w/AO QC	1	J
7117-4910	2.0mm Short Drill w/AO QC	2	K
7117-4911	2.0mm Long Drill w/AO QC	2	L
7117-4912	2.7mm Over Drill w/AO QC	1	M

2.7mm Screw and Size Specific Instrumentation Module

2.7mm Locking Screw

Cat. No.	Length	Qty	Reference
7240-2706N	6mm	4	A
7240-2707N	7mm	4	A
7240-2708N	8mm	4	A
7240-2709N	9mm	4	A
7240-2710N	10mm	4	A
7240-2711N	11mm	4	A
7240-2712N	12mm	4	A
7240-2713N	13mm	4	A
7240-2714N	14mm	4	A
7240-2715N	15mm	4	A
7240-2716N	16mm	4	A
7240-2717N	17mm	4	A
7240-2718N	18mm	4	A
7240-2719N	19mm	4	A
7240-2720N	20mm	4	A
7240-2721N	21mm	3	A
7240-2722N	22mm	3	A
7240-2723N	23mm	3	A
7240-2724N	24mm	3	A
7240-2726N	26mm	3	A
7240-2728N	28mm	3	A
7240-2730N	30mm	3	A
7240-2732N	32mm	3	A
7240-2734N	34mm	3	A
7240-2736N	36mm	3	A
7240-2738N	38mm	3	A
7240-2740N	40mm	3	A
7240-2742N	42mm	3	A
7240-2744N	44mm	3	A
7240-2746N	46mm	3	A
7240-2748N	48mm	3	A
7240-2750N	50mm	3	A
7240-2755N	55mm	3	A
7240-2760N	60mm	3	A
7240-2765N	65mm	3	A
7240-2770N	70mm	3	A
7240-2775N	75mm	3	A
7240-2780N	80mm	3	A

2.7mm Locking Screw

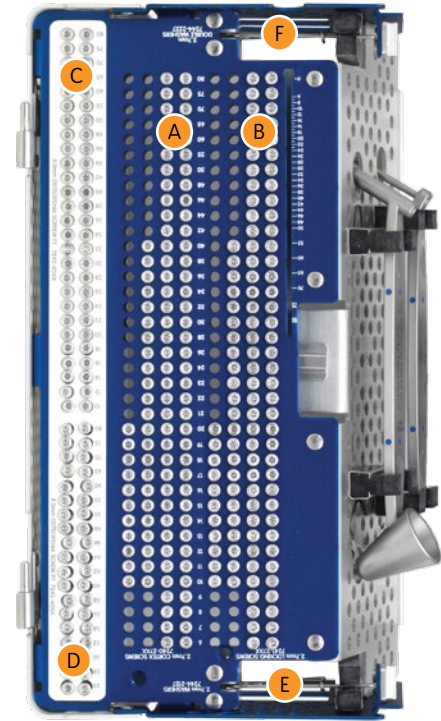
Cat. No.	Length	Qty	Reference
7241-2706N	6mm	4	B
7241-2707N	7mm	4	B
7241-2708N	8mm	4	B
7241-2709N	9mm	4	B
7241-2710N	10mm	4	B
7241-2711N	11mm	4	B
7241-2712N	12mm	4	B
7241-2713N	13mm	4	B
7241-2714N	14mm	4	B
7241-2715N	15mm	4	B
7241-2716N	16mm	4	B
7241-2717N	17mm	4	B
7241-2718N	18mm	4	B
7241-2719N	19mm	4	B
7241-2720N	20mm	4	B
7241-2721N	21mm	3	B
7241-2722N	22mm	3	B
7241-2723N	23mm	3	B
7241-2724N	24mm	3	B
7241-2726N	26mm	3	B
7241-2728N	28mm	3	B
7241-2730N	30mm	3	B
7241-2732N	32mm	3	B
7241-2734N	34mm	3	B
7241-2736N	36mm	3	B
7241-2738N	38mm	3	B
7241-2740N	40mm	3	B
7241-2742N	42mm	3	B
7241-2744N	44mm	3	B
7241-2746N	46mm	3	B
7241-2748N	48mm	3	B
7241-2750N	50mm	3	B
7241-2755N	55mm	3	B
7241-2760N	60mm	3	B
7241-2765N	65mm	3	B
7241-2770N	70mm	3	B
7241-2775N	75mm	3	B
7241-2780N	80mm	3	B

4.0mm Osteopenia Screw

Cat. No.	Length	Qty	Reference
7242-4010N	10mm	2	C
7242-4012N	12mm	2	C
7242-4014N	14mm	2	C
7242-4016N	16mm	2	C
7242-4018N	18mm	2	C
7242-4020N	20mm	2	C
7242-4022N	22mm	2	C
7242-4024N	24mm	2	C
7242-4026N	26mm	2	C
7242-4028N	28mm	2	C
7242-4030N	30mm	2	C
7242-4032N	32mm	2	C
7242-4034N	34mm	2	C
7242-4036N	36mm	2	C
7242-4038N	38mm	2	C
7242-4040N	40mm	2	C
7242-4042N	42mm	2	C
7242-4044N	44mm	2	C
7242-4046N	46mm	2	C
7242-4048N	48mm	2	C
7242-4050N	50mm	2	C
7242-4055N	55mm	2	C
7242-4060N	60mm	2	C
7242-4065N	65mm	2	C
7242-4070N	70mm	2	C
7242-4075N	75mm	2	C
7242-4080N	80mm	2	C

4.0mm Partially Threaded Osteopenia Screw

Cat. No.	Length	Qty	Reference
7243-4026N	26mm	2	D
7243-4028N	28mm	2	D
7243-4030N	30mm	2	D
7243-4032N	32mm	2	D
7243-4034N	34mm	2	D
7243-4036N	36mm	2	D
7243-4038N	38mm	2	D
7243-4040N	40mm	2	D
7243-4042N	42mm	2	D



Cat. No.	Length	Qty	Reference
7243-4044N	44mm	2	D
7243-4046N	46mm	2	D
7243-4048N	48mm	2	D
7243-4050N	50mm	2	D
7243-4055N	55mm	2	D
7243-4060N	60mm	2	D
7243-4065N	65mm	2	D
7243-4070N	70mm	2	D
7243-4075N	75mm	2	D
7243-4080N	80mm	2	D

Washers

Cat. No.	Description	Diameter	Qty	Reference
7244-2124N	Washer for 2.7mm Screws	7mm	4	E
7244-2227N	Double Washer for 2.7mm Screws	13mm	4	F

Ordering information

Cat. No.	Description
7141-0200	EVOS® MINI General Instrument Set
7141-0201N	EVOS MINI Plate Set
7141-0202	EVOS MINI Disposable Set
7141-0203	EVOS MINI Size Specific Instrument Set
7141-0204N	EVOS MINI Screw Set
7141-0205	EVOS MINI Plate Template Set
7141-0206N	EVOS MINI Osteopenia Screw Set

Smith & Nephew, Inc.

1450 Brooks Road
Memphis, TN 38116
USA

www.smith-nephew.com

Telephone: 1-901-396-2121
Information: 1-800-821-5700
Orders and Inquiries: 1-800-238-7538

®Trademark of Smith & Nephew. Certain marks Reg. US Pat. & TM Office.

©2015 Smith & Nephew.
00757 V4 07/15